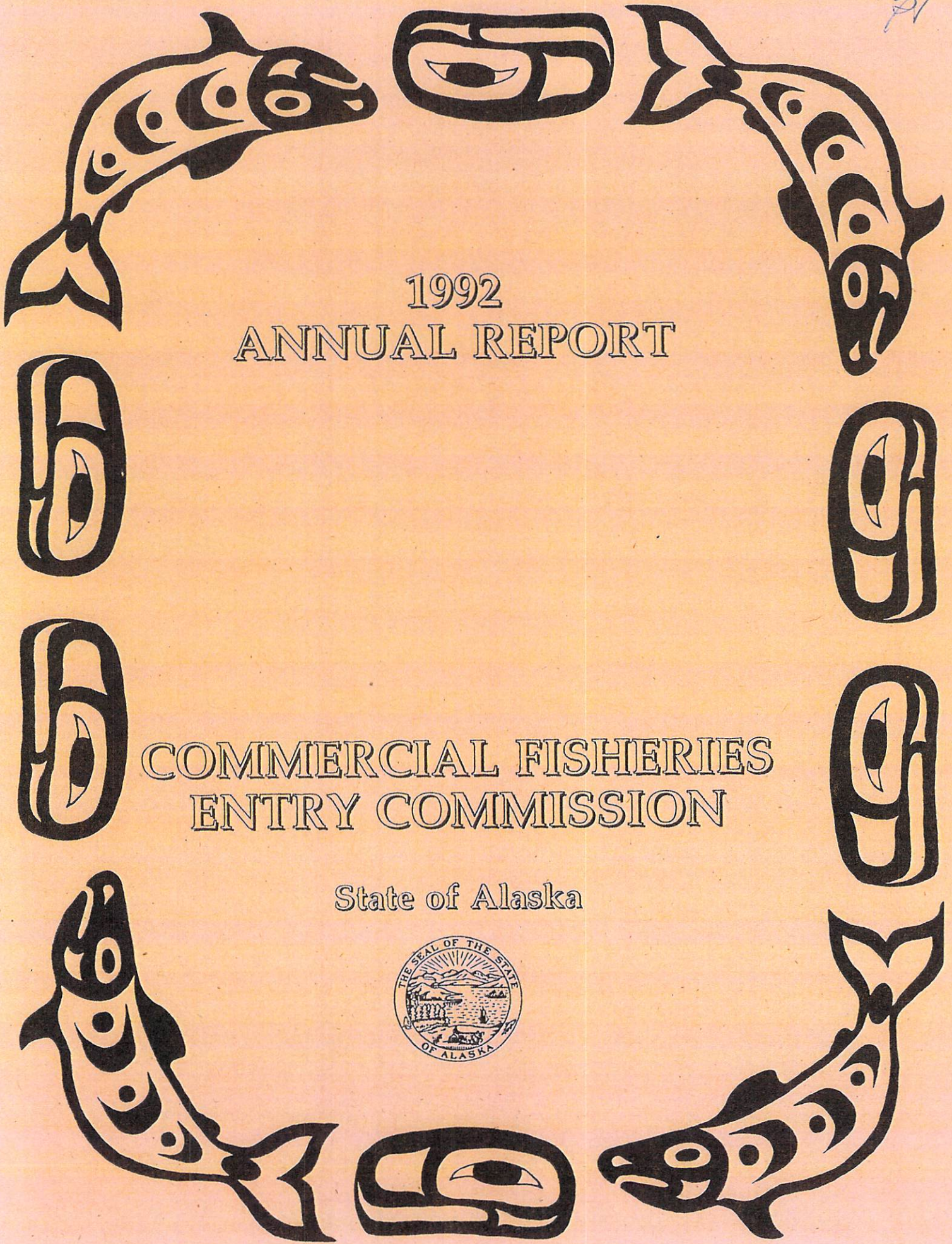


21

1992  
ANNUAL REPORT

COMMERCIAL FISHERIES  
ENTRY COMMISSION

State of Alaska



# COMMERCIAL FISHERIES ENTRY COMMISSION



Walter J. Hickel  
Governor  
State of Alaska

## COMMISSION

Bruce Twomley, Chairman  
Rich Listowski, Commissioner  
Frank Homan, Commissioner

## ADJUDICATIONS

Frank Glass  
Adjudications Project Leader

## DATA PROCESSING

Roger Kolden  
Data Processing Project Leader

## LICENSING

Christine Kelly  
Licensing Project Leader

## RESEARCH

Kurt Schelle  
Research and Planning Project Leader

## OFFICE LOCATION AND MAILING ADDRESS

Jordan Creek Mall  
8800 Glacier Highway #109  
Juneau, AK 99801

## TELEPHONE

(907) 789-6160 - Main Number  
(907) 789-6150 - Licensing Only

## FAX

(907) 789-6170

## TYPIST FOR ANNUAL REPORT

Sandra Thomas  
Secretary II

## COVER

"Recycle" Designed by Sandy Samaniego

# 1992 ANNUAL REPORT\*

INTRODUCTION .....	1
Organization by Agency Function .....	4
Major Decisions/Activities Affecting Agency Operations .....	5
ADJUDICATIONS .....	7
Overview .....	7
Administrative Proceedings and Decisions .....	7
Investigations .....	8
Judicial Rulings and Appeals .....	8
Internal Revenue Service Seizures of Limited Entry Permits .....	9
LICENSING .....	11
1992 Licensing Revenue .....	14
Licenses Issued For 1992 .....	15
Licensing Field Office .....	16
RESEARCH .....	17
Limitation Studies .....	17
Optimum Number Research .....	18
Permit Distribution Patterns .....	18
Other Reports/Activities .....	19
APPENDIX .....	22
Table 1. Permit and Permit Transfer Statistics, 1975-1992 .....	22
Table 2. Loans Made by the Department of Commerce and Economic Development for the Purchase of Entry Permits by Election District .....	40

\* Pursuant to AS 16.43.980, this report is the Commission's annual report to the Legislature.

The Commercial Fisheries Entry Commission operates all of its public programs and activities free from discrimination on the basis of race, religion, color, national origin, age, sex or handicap. Because the Commission receives federal funding, any person who believes he or she has been discriminated against should write to:

O.E.O.  
U.S. Department of Interior  
Washington, D.C. 20240

## INTRODUCTION

The Commercial Fisheries Entry Commission (CFEC) is an exempt, independent, quasi-judicial agency responsible for promoting the conservation and sustained yield management of Alaska's fisheries resources and the economic health and stability of commercial fishing in Alaska by regulating entry into commercial fisheries.

To meet these responsibilities, the Commission is organized into four sections (Adjudications, Research, Licensing, and Data Processing; see, chart: "Organization by Agency Function") and engages in the following activities mandated by law (AS 16.43):

Establishes maximum numbers of entry permits for fisheries to be limited and ranks eligible applicants according to the relative hardship they would suffer by not receiving an entry permit from the state for a limited fishery;

Evaluates entry permit applications and adjudicates claims not resolved in initial classification;

Issues entry permits in limited fisheries, interim-use permits in unlimited fisheries, and licenses for all vessels as required to legally participate in the state's commercial fisheries;

Reviews requests for emergency and permanent transfers of entry and interim-use permits, and compiles data on all such transfers;

Enforces provisions of the Limited Entry Act by regulating permit transfer activities, conducting investigations, and initiating administrative enforcement proceedings;

Monitors unlimited fisheries to assess the rate of development and the potential need for limitation;

Monitors limited fisheries to obtain information needed for setting optimum numbers in those fisheries and to determine the need for fleet reduction or increase;

Participates in the research and development of comprehensive fisheries economic data, which is made available to policy makers and members of the public; and,

Works with other state and federal management agencies to develop and coordinate fisheries policies.

A brief outline of some of the major court decisions, Commission activities, and other events affecting the operation of the Commission during the past several fiscal years can be seen in the summary table which follows this introduction.

In 1992, the Commission and its staff continued to meet its responsibilities despite the declining budget, which forced employee layoffs and position cuts, and voluntary leave-without-pay contributed by existing employees.

Hearing officers in the Adjudications Section completed 205 administrative hearings this year, and issued 172 decisions, which is an all-time high for one year. Also, CFEC Commissioners adjudicated a total of 115 cases during 1992. In addition to conducting hearings and issuing decisions on appeals of emergency transfer requests, Commission paralegals classified applications for limited permits in the Togiak herring spawn on kelp fishery and interim-use permits in the Southeastern Dungeness crab fishery.

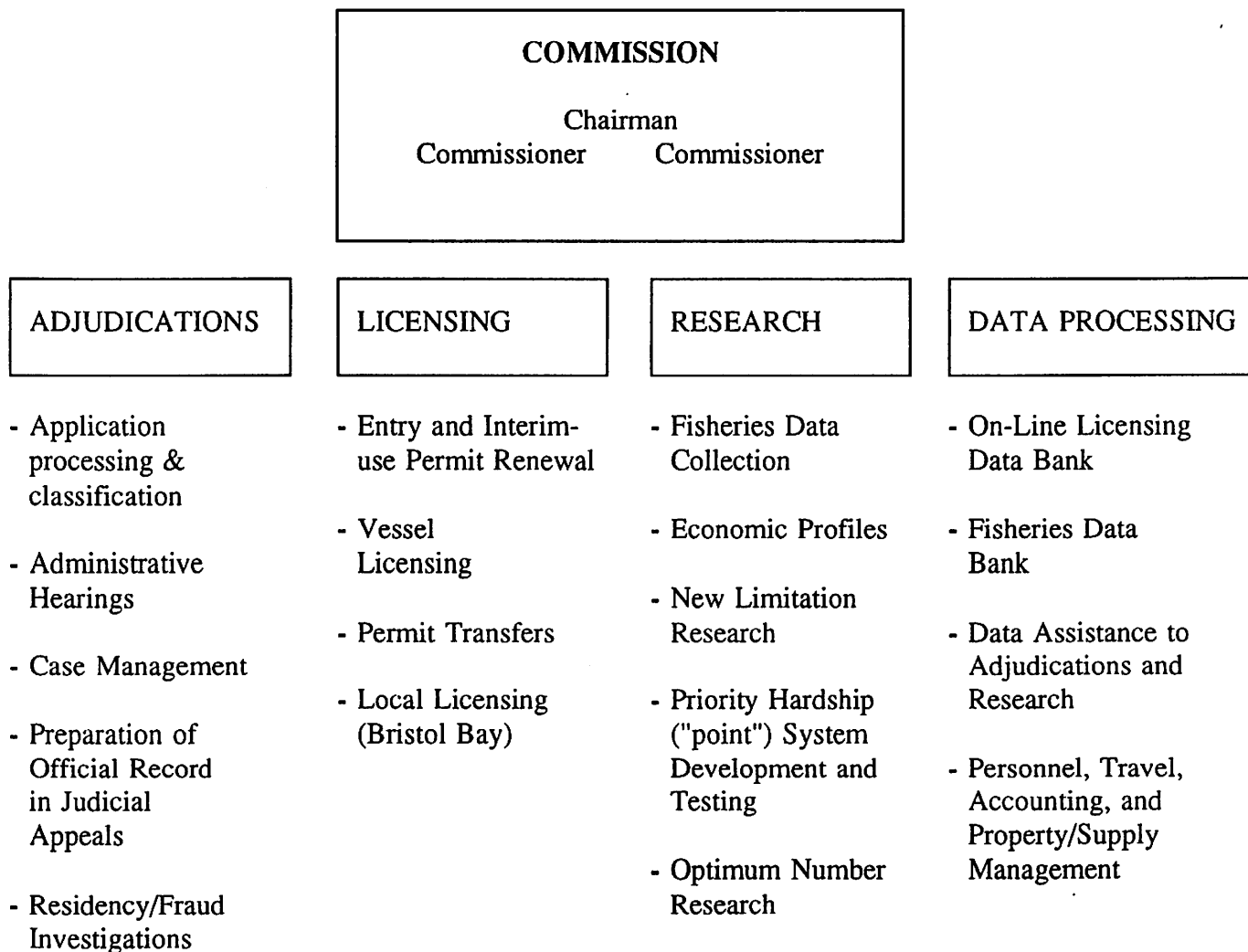
The Licensing Section again issued more than 50,000 permits and licenses and collected more than \$6 million in revenue to the state. Additionally, the licensing staff processed 1,860 requests for transfers of permits, and responded to an ever increasing number of information requests from the public regarding a variety of fisheries licensing questions.

The Research Section continued many projects including analyses of fisheries issues, monitoring trends in Alaska's fisheries, providing data needed by other agencies and the public, evaluating the need for access controls in particular fisheries, and developing an optimum number recommendation in the Southeastern Alaska roe herring purse seine fishery. Research also completed analyses and reports requested by the Legislature, the Office of the Governor, and the Alaska Department of Fish and Game (ADF&G).

The Data Processing Section continued to improve upon the computer support that allows the Commission to perform its functions efficiently. Commission programmers have networked new computer resources which will help contain costs and provide needed computing capacity in the face of reduced allocations. Additionally, the Data Processing Section provides important information to the public and to other government agencies in the form of both automated and special request programming jobs.

The following parts of this report provide a more thorough outline of some of the year's important events by operating section. The appendix provides summary data on Alaska's limited fisheries and permits. Questions or comments about the contents of this report are welcome.

**COMMERCIAL FISHERIES ENTRY COMMISSION**  
**Organization by Agency Function**



**\*NOTE:** The above organizational chart presents a general view of the Commission's primary functions. It by no means lists all activities undertaken to meet the Commission's statutory responsibilities as set forth in AS 16.43.

**Major Decisions/Activities Affecting Agency Operations**

**(Fiscal Years 1993 - 1988)**

- FY93:**
- \* Completed optimum number study for the Southeastern Alaska roe herring purse seine fishery. (Johns v. State, CFEC)
  - \* Proposed optimum number regulation pursuant to the study.
  - \* Developed and successfully worked for passage of Governor's SB 449 to govern forced transfers of entry permits following the court decisions in Lorentzen and Anderson.
  - \* Adopted regulations to implement SB 449 and establish procedures to govern the forced transfer of limited entry permits by authorized creditors.
  - \* Conducted workshops related to getting and keeping limited entry permits in local communities.
  - \* Commissioners and hearing officers each completed more than 100 adjudicatory decisions. (Since 1983 nearly 1000 decisions and only two reversals by courts.)
  - \* Conducted many research projects in response to requests from the Commission and others (for example, limited entry studies, Alaska Board of Fisheries, ADF&G, Governors Office, fishing associations and Legislators).
- FY92:**
- \* Conducted workshops to aid rural Alaskans get and keep limited entry permits in their local communities.
  - \* Completed initial classification of Western Alaska herring and Togiak herring spawn on kelp fisheries applications.
  - \* An optimum number study in process for the Southeastern Alaska roe herring purse seine fishery.
  - \* Conducted research, held public hearings, adopted regulations and implemented a moratorium (in response to HB 137 from the previous year) in the Southeastern Alaska Dungeness crab fishery (more than 300 eligible to apply).
  - \* Aided the Alaska Board of Fisheries in its creation of a new open access salmon set net fishery around Atka Island for the 1992 season, which will commercially harvest local pink salmon stocks.



- \* Federal District Court ruled in the Lorentzen case that the Internal Revenue Service could place federal tax liens upon limited entry permits.
  - \* In response to the Lorentzen and earlier Anderson cases, legislation introduced by Governor Hickel to govern involuntary transfers of entry permits passed unanimously by the legislature.
- FY91:**
- \* Togiak herring spawn-on kelp fishery point system adopted, application period began, approximately 500 applications were received. Initial classification of approximately half of the 1,813 Western Alaska herring permit applications completed.
  - \* In the Lorentzen case, a permit holder joined by the state as a friend of the court obtained a preliminary injunction from the Federal District Court against the Internal Revenue Service which blocked the IRS' scheduled sale of the holder's entry permit.
- FY90:**
- \* Exxon Valdez oil spill continued to make demands on Data Processing; Research services required to respond to legal activity.
  - \* Western Alaska herring fisheries point systems finalized, and almost 1100 applications received.
  - \* Togiak herring spawn on kelp fishery researched, hearings held, and fishery limited.
- FY89:**
- \* Research and hearings on Western Alaska herring fisheries point systems.
  - \* Wassillie settlement finalized, processing of 273 applications began.
  - \* Alaska Supreme Court decision in Johns case: extensive research and data analysis for optimum number determinations began.
  - \* Exxon Valdez oil spill in Prince William Sound created significant demand for Data Processing services to assist affected fishermen.
- FY88:**
- \* Research and hearings on PWS herring spawn on kelp pound fishery point system and processing of 140 applications began.
  - \* Processing of 213 applications for the Southeastern black cod fisheries began.
  - \* Western Alaska herring fisheries researched, extensive hearings in Western Alaska villages held, and five fisheries limited.

## ADJUDICATIONS

### Overview

The Adjudications Section at the Commission is responsible for processing applications for entry permits in limited fisheries and conducting hearings for those who contest Commission decisions affecting them. The section also conducts investigations into potential violations of the Commission's statutes and regulations, and provides assistance to other enforcement agencies.

Entry permit applications are first evaluated by Commission paralegals who classify applicants in a ranking system that measures each applicant's past participation and economic dependence on the fishery. Applicants who disagree with their initial classifications may request hearings. Hearings are also available to contest initial decisions about permit transfer requests or about qualifications for reduced permit renewal fees.

Commission hearing officers conduct administrative hearings throughout the state and decide appeals of initial determinations about entry permit applications, permit transfer requests, and fee arrearages charged to those who wrongly claimed to be Alaska residents. The Commissioners review and affirm or modify hearing officers' decisions on their own motion, or upon the request of an affected party. If no review is ordered by the Commissioners, hearing officer decisions become final in 60 days.

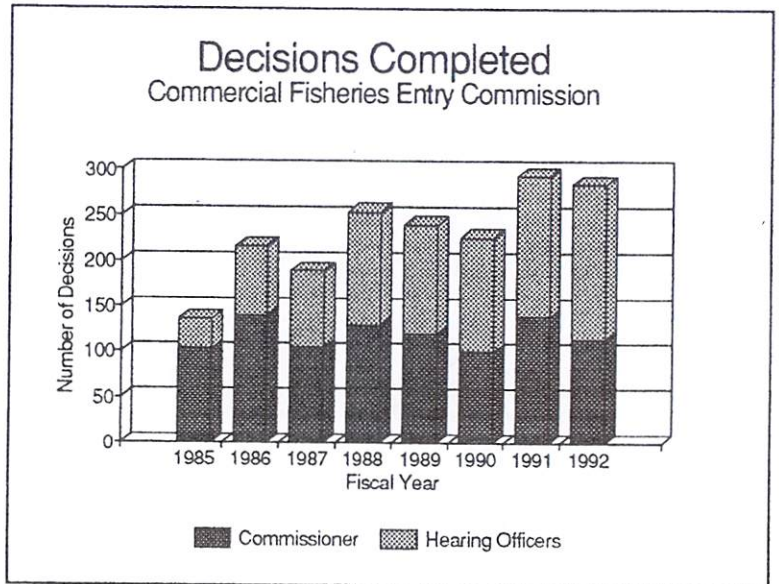
Commission hearing officers also preside in "show cause" hearings. These hearings are held in the presence of the Commissioners. In these proceedings, the Commission may impose fines, or revoke or suspend the permits of those who attempt to mislead the Commission with false information.

### Administrative Proceedings and Decisions

During 1992, Commission paralegals continued to conduct hearings and decide appeals of denied emergency transfer requests.

During 1992, Commission paralegals completed most of the initial classification of applications for Togiak herring spawn on kelp permits, and processed applications for interim-use permits in the first year of the moratorium on new entrants into the Southeastern Dungeness crab fishery.

The hearing officers conducted 205 hearings in 1992: 157 on permit applications, 25 on permit transfers, and 23 miscellaneous actions. The hearing officers issued 172 decisions: 108 on permit applications, 40 on permit transfers, 2 on fee arrearages, 21 miscellaneous actions, and 1 on a show cause proceeding. At the end of the year, 636 cases were in various stages leading up to the issuance of a decision by a hearing officer.



The Commissioners adjudicated a total of 115 cases during 1992: 68 permit applications, 41 permit transfers, 4 show cause actions, and 2 on miscellaneous matters. At the end of the year, 187 cases were in various stages of the adjudication process leading to the issuance of final decisions by the Commissioners.

### Investigations

During 1992, the Commission received fines and arrearages of \$34,514 due to the successful settlement of prior actions. The Commission continues to cooperate with state and federal law enforcement agencies.

### Judicial Rulings and Appeals

The Alaska Supreme Court issued an important decision in 1992 about the Commission and entry permits. In CFEC, State v. Russo, 833 P.2d 7 (Alaska 1992), the court upheld the CFEC's definition of the "unavoidable circumstances" provision, and held that earlier decisions allowing the partners of gear license holders to claim points for income dependence did not extend so far as to let these unlicensed partners receive points for fishing as gear license holders.

### **Internal Revenue Service Seizures of Limited Entry Permits.**

For the past ten years, the Internal Revenue Service (IRS) has attempted to seize and force the sale of Alaska limited entry permits. The Entry Commission has approached the issue in two ways. The Commission has done everything in its power to fulfill the purposes of the Alaska Limited Entry Act (which exempted limited entry permits from the claims of all creditors), including initiating one federal court action and defending another. Additionally, the Commission has sought to cooperate with the IRS to facilitate voluntary compliance by fishermen in order to avoid federal seizure of Alaska limited entry permits. From the beginning, the Commission has consistently warned fishermen that they must pay their taxes.

In March of 1992, the Federal District Court's decision in the Lorentzen case held that Alaska limited entry permits are subject to IRS tax liens. The net effect of this decision is that (in addition to child support claimants with judgments for arrearage) the Internal Revenue Service is authorized to enforce its liens against Alaska limited entry permits. Otherwise, the decision does not change state law: Alaska limited entry permits remain generally exempt from the claims of creditors and may not be pledged as security for debts with the exception of loans from the state commercial fisheries loan program and the Alaska Commercial Fishing and Agriculture Bank (CFAB).

In response to the Lorentzen and the earlier Anderson decisions, the Alaska Legislature unanimously adopted Governor Walter J. Hickel's SB 449 (Chapter 55, SLA 1992) to govern the two authorized forms of involuntary transfer. The new legislation authorizes such transfers and requires them to conform to applicable state law and, among other things, protects the revolving loan funds of the state loan program and CFAB. The Commission and the Department of Law have since been developing regulations to implement the new legislation.

At the same time, the Commission engaged in a dialogue with the IRS to address, among other things, the problem of informing a prospective transferee of an entry permit of the possible existence of a federal tax lien. Beginning in June, the Commission sent letters to parties to all transfers warning them that federal tax liens do apply to entry permits. The IRS refuses to provide the Commission actual notice of its liens, but, the IRS agreed to inform parties to transfers of federal tax liens filed in Alaska. However, the problem of identifying all federal tax liens against former holders of an entry permit--particularly those who resided outside of Alaska--remains unresolved.

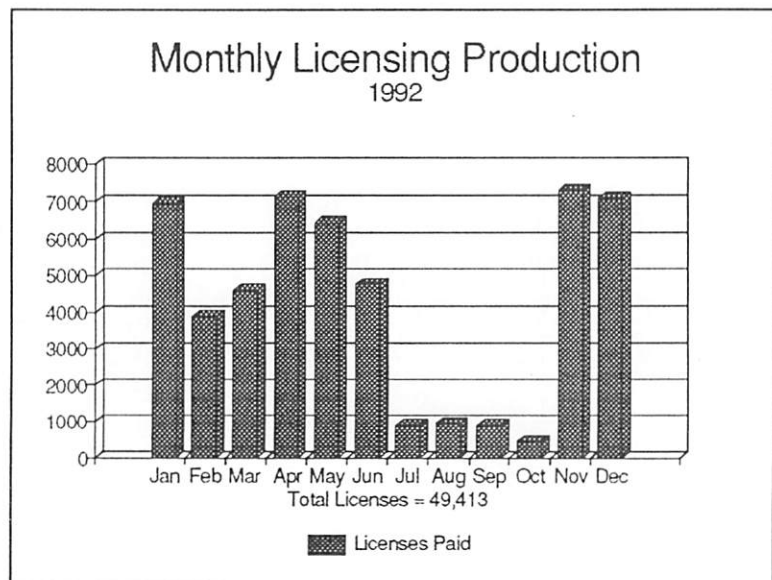
In late August, the IRS advertised that in October of 1992 it would conduct a public auction of 20 seized Alaska limited entry permits. By the time of the sale, only five permits remained on the auction block. Uncertainty surrounded the sale, because the IRS warned all potential buyers that the holder of an entry permit could redeem the permit up until the time of final transfer by the Entry Commission. Therefore, no successful bidder could be assured of actually receiving the permit. In turn, the Entry Commission notified all potential buyers of the newly enacted state legislation. Subsequent to the auction, the IRS requested transfer of only three of the permits sold at auction. The Entry Commission continued to develop regulations to implement Chapter 55, SLA 1992. The regulations must be effective for the Entry Commission to have authority to process the requests. The Entry Commission anticipates that regulations will be in effect prior to the 1993 salmon season.

Near the end of 1992, together with CFAB, the Entry Commission entered a formal working group with the Chief of Collections for the IRS in Alaska. The group will share public information in the hope of facilitating voluntary compliance by fishermen with tax obligations, acquainting the IRS with some of the unusual factors affecting fishermen in Alaska, and encouraging restraint in the seizure of entry permits by the IRS. In order to better define the problem, the IRS promised the Commission information as to the distribution of entry permit holders with outstanding tax obligations. Additionally, the Entry Commission is consulting with interested Alaska legislators and others for the purpose of analyzing the problem and reviewing proposed solutions.

## LICENSING

The Entry Commission's Licensing Section plays a vital role in Alaska's commercial fishing industry as it issues all of the permits and vessel licenses required for individuals and vessels to fish commercially in the state on an annual basis. The licensing workload fluctuates with the seasonal nature of the fisheries, with the majority of the 50,000 licenses issued between November and June. In addition to permit and vessel license issuance, the section reviews and makes determinations of approval or denial of all requests for permanent and emergency (temporary) transfers of entry permits.

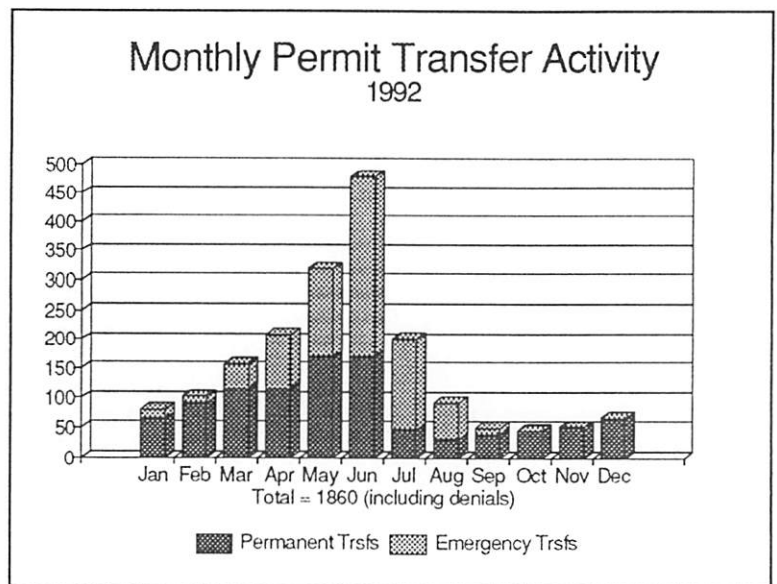
The small licensing staff has been able to cope with the increasing demands of the workload only through extensive reliance upon automated equipment and a customized database system developed and maintained by the Commission's data processing staff. In the past few years, despite the highly efficient licensing system, staff resources have been strained by the growing number of telephone calls to which the section must respond, and the increasing complexity of the subject matter. Licensing staff must be aware of



statutory, regulatory and programmatic changes in fisheries throughout the state, as well as developments in federally managed fisheries (such as the potential implementation of a federal moratorium or IFQ program). As confusion among fishermen escalates in regards to the legal requirements with which they must deal, so does the amount of time the licensing staff spends responding to inquiries. This has a definite impact on "turnaround time" for processing license applications and transfer requests as there are days when the staff has almost no time to work on applications received in the mail because of the number of incoming phone calls.

The new format for permit and vessel license renewal forms developed in-house, which was first used for the 1992 season, has been very successful in improving efficiency. Combining several licenses on a single form significantly reduced the amount of paper handling, speeding the data entry and embossing processes and decreasing the amount of filing. It also simplified the renewal process for the fishermen and many favorable comments have been received. In addition, the new format provides more flexibility in dealing with late-breaking developments that affect licensing, since the Commission is no longer subject to the time constraints of outside vendors.

During 1992, permit transfer activity increased slightly over the 1991 level, with a total of 1,860 requests received. This included 1,005 requests for permanent transfer, of which 55 were denied and 950 approved, and 855 requests for emergency transfer, of which 30 were denied and 825 approved. The accompanying graph clearly demonstrates the seasonal nature of the transfer workload. During the five months from March through July, the transfer staff reviewed 73% of the total transfer



requests received during 1992. During the peak of the transfer season, it has been necessary for 2-3 licensing staff to divert their efforts from their regular duties to transfers in order to maintain an acceptable level of service. The transfer process has become more involved over time due to the increasing complexity of related issues such as Internal Revenue Service (IRS) and Child Support Enforcement lien problems, more permits held by estates, etc., with the result that the workload is definitely more than one person can possibly handle. During 1993, it is anticipated that one or two positions will be reclassified to work primarily with transfers, at least on a seasonal basis. Providing more extensive cross-training will enable us to utilize limited staff resources more effectively in responding to shifts in distribution of the workload.

The Commission was able to continue the licensing field office operations in Bristol Bay during 1992, although there were cutbacks in the number of days of service provided. The full-time licensing office in Kodiak was closed due to budgetary reductions when the licensing clerk position there became vacant in mid-July. More detail about licensing field office operations follows the breakdown of licenses issued during 1992.

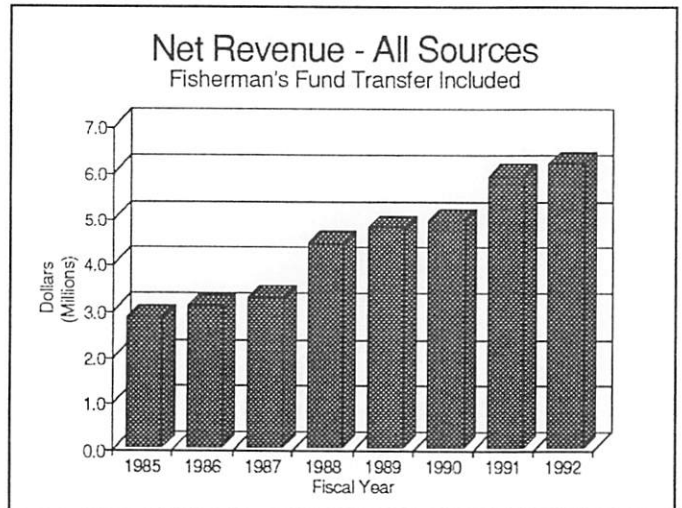
The Commission's licensing section takes in a significant amount of revenue from annual permit and vessel license fees, one-time limited entry application fees, fines and arrearages assessed pursuant to residency investigations or revocation actions, and user fees charged for licensing services at field offices. According to Alaska Statute 23.35.060, the Commission must transfer 60% of the "commercial fishing license" fee for each fisherman (this amounts to \$18 for each resident and \$54 for each nonresident) to the Fishermen's Fund program administered by the Department of Labor. A breakdown of revenues received during both fiscal and calendar year 1992 appears in the following table.



**1992 Licensing Revenue**

<u>REVENUE SOURCE</u> *	<u>FISCAL YEAR 92</u>	<u>CALENDAR YEAR 92</u>
Permit Fees	\$ 5,678,255	\$ 5,821,370
Vessel License Fees	308,780	335,538
Limited Entry		
Application Fees	21,870	7,940
Field Office User Fees	41,160	32,820
Fines/Arrearages	81,571	34,514
NSF Check Penalties	1,150	825
Misc. Revenue	<u>68,831</u>	<u>71,694</u>
<b>GROSS REVENUE</b>	<b>\$ 6,201,617</b>	<b>\$ 6,304,701</b>
Refunds	-102,328	-104,462
NSF Checks	<u>- 10,960</u>	<u>- 11,380</u>
<b>NET REVENUE</b>	<b>\$ 6,088,329</b>	<b>\$ 6,188,859</b>
<b>FISHERMAN FUND</b>		
<b>TRANSFER</b>	<b>\$ 467,136</b>	<b>\$ 467,046</b>

\* This report indicates total revenue received during the specified time period from each source, regardless of the license year; it may include fees for permits and vessel licenses for 1991, 1992 and 1993.



**Licenses Issued For 1992**

Limited Entry Permits <u>Not</u> Renewed .....	491
Limited Entry Permits Revoked or Lapsed (since 1975) .....	<u>537</u>
Limited Entry Permits Renewed .....	12,929
Interim Permits in Fisheries under Limitation or Moratoria .....	1,132
Interim Permits in Open-to-Entry Fisheries .....	18,137
Special Harvest Area (Hatchery) Permits .....	16
Educational Entry Permits .....	<u>5</u>
<b>PERMITS PAID FOR 1992 .....</b>	<b>32,219</b>
<b>VESSELS LICENSED FOR 1992 .....</b>	<b><u>17,194</u></b>
<b><u>TOTAL PERMITS AND VESSEL LICENSES</u> .....</b>	<b>49,413</b>
<b>Alaska Resident Permit Holders .....</b>	<b>13,479</b>
<b>Nonresident Permit Holders .....</b>	<b><u>4,156</u></b>
<b><u>TOTAL PERMIT HOLDERS</u> .....</b>	<b>17,635</b>

\$467,046 was transferred to the Fishermen's Fund from permit fees for license year 1992.

**Licensing Field Office**

During 1992, the Commission found it necessary to make some reductions in services provided at licensing field offices. The Kodiak licensing office which had been operated on a full-time basis since 1983 (with the position jointly funded by the ADF&G and CFEC since 1987) was permanently closed on July 16, 1992. The office closure was the result of budget reductions which impacted both ADF&G and CFEC causing the licensing clerk position to become vacant, at which time the Commission could no longer justify expending limited resources to maintain an office which was not fully utilized.

The following chart indicates usage of field office services during 1992. The user fee is a surcharge of \$10.00 for each permit or vessel license obtained at a field office.

<b><u>Field Office Locations</u></b>	<b><u>Permits Issued*</u></b>	<b><u>Vessels Licensed</u></b>
Kodiak	2,027	709
Dillingham	946	105
King Salmon	420	137

**TOTAL FIELD OFFICE USER FEES** **\$32,820**

\* Permits Issued includes original cards and duplicates.

In 1992, the Commission provided licensing and transfer service during the Bristol Bay salmon season, through the ADF&G offices in Dillingham and King Salmon, although the period of coverage was reduced significantly from prior years. Rather than providing staff in both Dillingham and King Salmon during most of the season, the Dillingham office was open for one week in early June, then the King Salmon office was operated for the next three weeks, as only one staff member at a time could be spared from the Juneau office. In addition, a licensing clerk was on duty in Dillingham for a few days prior to the herring season.

## RESEARCH

The research section provides the background research and data analyses needed by the Commission. The section, coupled with the Commission's data processing section, also produce basic economic data on Alaska's fisheries which can be used to address many policy questions and to develop standard or specialized reports to serve the data needs of users outside the agency.

In 1992, the Commission's research staff was involved in many projects. These projects included efforts to monitor trends in Alaska's fisheries, to evaluate the need for access controls in particular fisheries, to provide other agencies and users with needed data, and to develop optimum number recommendations for the Southeastern Alaska roe herring purse seine fishery.

The staff also produced analyses on issues for the Legislature, the Office of the Governor, the ADF&G, and the Alaska Board of Fisheries. In addition, the staff answered numerous information and data requests from the general public. The following paragraphs provide brief highlights of 1992 activities.

### Limitation Studies

Each year, as Alaska's unlimited fisheries face increasing fishing pressure, the Commission receives requests to limit entry into additional fisheries. When a petition is received, the Commission conducts research to determine if access limitation is needed and to evaluate whether or not the existing limited entry program would produce significant benefits.

The nature of the fleet and the applicable regulations are evaluated to determine the extent to which limiting the number of participants will serve to contain the growth in effort. Historical fishing patterns are analyzed and an effort is made to determine the best way to define the fisheries for limitation purposes to help prevent post-limitation effort increases.

In 1992, the Commission was again petitioned to limit the Cook Inlet crab fisheries. In response to the petitions, the research staff completed three reports on the Cook Inlet crab fisheries. These reports are The Cook Inlet Dungeness Crab Fishery (92-14N), The Cook Inlet Tanner Crab Fishery (92-15N), and The Cook Inlet King Crab Fishery (92-16N). All three reports were prepared by S. Shirley.

Another report, Prince William Sound Herring Spawn-on-Kelp Diving / Handpicked Fishery (92-9), was prepared by A. Tingley. This study was also conducted in response to a limitation petition. Analyses of other petitions occurred in 1992, but reports are not yet completed. CFEC non-confidential briefing reports are available upon request.

### **Optimum Number Research**

In 1992, the Commission's research staff completed an optimum number study for the Southeastern Alaska roe herring purse seine fishery. The results of the analyses are contained in Southeastern Alaska Roe Herring Purse Seine Fishery - Optimum Number Report (92-2) prepared by K. Schelle, B. Muse, and K. Iverson. This work was mandated by the decision of the Alaska Supreme Court in Johns v. State, CFEC, 758 P.2d 1256 (Alaska 1988).

The Johns case orders the Commission to make an optimum number decision in the Southeastern Alaska roe herring purse seine fishery. Johns recognizes that more permits could be created and sold as a result. Because Johns is premised on a constitutional issue, the same claim could be brought in any limited fishery where there has been a substantial change in conditions since the time the fishery was limited.

Based on the information and analyses in the study, the Commission has proposed an optimum number of 44 for the fishery. The public comment period for the proposal will run through June 1, 1993. Interested persons may submit comments to Sandy Samaniego, the Commission's Law Specialist.

Due to the size of the optimum number report, a \$10.00 fee is being charged per copy to help offset the cost of copying and mailing. Persons who want copies of the optimum number report should send their request with payment to Ms. Samaniego.

### **Permit Distribution Patterns**

In 1992, the Commission continued to monitor changes in the distribution of holders of Alaska's limited entry permits. This is a topic which continues to be an important concern to Alaskans and their legislators. The report Changes In The Distribution Of Alaska's Limited Entry Permits, 1975-1991 (CFEC Report 92-17), co-authored by R. Berning and E. Dinneford provides extensive data, information, and analyses on the topic.

This report updates previous studies by the Commission. For analysis purposes, the report defines five resident-types relative to each limited fishery. These include non-residents and four Alaskan resident-types. The four Alaskan resident-types are based upon whether a permit holder lives in a rural or urban community, and whether that community is considered local or non-local to the limited fishery.

The report provides data on the 48 limited fisheries for which permanent permits had been issued through year-end 1991. It covers the 1975 through 1991 time period and includes detailed information on the changes in the number and type of entry permits held by each Alaskan resident-type and non-residents.

The report provides fishery specific and statewide data on transfer incidence, the initial geographic distribution of permit holders, changes due to permit transfers, changes due to permit holder migrations, and the year-end 1991 geographic distribution of permit holders. Data are also provided on the age distribution of permit holders through time and age differences between transferors and transfer recipients.

Summary statistics are also reported from CFEC's transfer survey. These statistics provide information on the incidence of transfers between family members and business partners, transfer acquisition methods, and transfer financing methods. Copies of the report are available upon request.

### Other Reports/Activities

During the year, the Commission's research staff produced many ad hoc reports for the Commission and small reports for the Alaska Board of Fisheries and Alaska's Legislature. The staff produced monthly permit value estimates for the Department of Commerce and Economic Development and other users. E. Dinneford produced a number of reports on wholesale production and value for both the Commission and outside users and produced reports for the Commission on changes in permit holdings in particular fisheries by village.

The Alaska Board of Fisheries frequently needs data or background reports on limited fisheries to help them analyze regulatory proposals. In 1992, CFEC's research staff prepared the following reports for the Alaska Board of Fisheries:

Background Report on Limited Entry In the Peninsula / Aleutians Salmon Fisheries (92-3)  
prepared by S. Shirley.

Background Report On Limited Entry In The Hand and Power Troll Fisheries (92-4) prepared by S. Shirley.

Background Report On Limited Entry In the Arctic-Yukon-Kuskokwim Salmon Fisheries (92-5) prepared by S. Shirley.

Earnings, Ex-Vessel Value and Residency for the Southeast Alaska Commercial Troll Fishery (92-6) prepared by S. Shirley and E. Dinneford.

Several analyses and reports were also prepared for ADF&G and/or the Office of the Governor. Two reports, Changes In Holdings of Permanent Limited Entry Permits In Metlakatla, Alaska 1975-1991 (92-12) and Bristol Bay Drift and Set Gill Net Harvest and Estimated Gross Earnings, By District and Residency, 1986-1991 were prepared by E. Dinneford at the request of ADF&G.

In December of 1991, the North Pacific Fishery Management Council (NPFMC) passed Individual Fishing Quota programs for the halibut and sablefish fisheries off of Alaska. Many Alaskans remained concerned about the potential impacts of these programs, and some proposed amendments to the Council's plan. The Office of the Governor and ADF&G asked for the Commission's help in analyzing three proposed amendments.

Preliminary results of these studies were contained in two discussion draft reports which were distributed by the NPFMC. The first report was titled Analysis of the "1,000 Pound Minimum IFQ" Proposed Amendment To The Individual Fishing Quota Management Alternative For Alaska's Fixed Gear Halibut Fishery. The second report was titled Analyses of "The Sitka Block Proposed Amendment" and "The Full/Partial Block Proposed Amendment" To The Individual Fishing Quota Management Alternative For Fixed Gear Sablefish and Halibut Fisheries - Gulf of Alaska And Bering Sea/Aleutian Islands. These analyses were prepared by K. Schelle, B. Muse, and K. Iverson.

Copies of these discussion draft reports can be obtained from the NPFMC. Based upon public comments, the NPFMC decided to modify the alternatives and to expand and develop the report into Environmental Assessment/Regulatory Impact Review/Initial Regulatory Flexibility Analyses. At the request of the State of Alaska, CFEC will again take the lead in the expanded analyses which will occur during 1993.

The research staff also provided some assistance on a report prepared by D. Ackley of the ADF&G on another regulatory issue before the NPFMC. The report was titled Draft Environmental Assessment/Regulatory Impact Review/Initial Regulatory Flexibility Analysis For Amendment 21B to the Fishery Management Plan for The Groundfish Fishery of the Bering Sea and Aleutian Islands: Chinook Salmon Bycatch Management In The BS/AI.

Alaska's Legislature also frequently asks the Commission for data or analysis of particular issues which they are considering. In 1992, the following analyses and reports were prepared at the request of Alaska's Legislature:

Potential Impacts Of Allowing Older Hand Trollers To Convert Their Permits To Non-Transferable Power Troll Permits (92-1) by S. Shirley, K. Schelle, and E. Dinneford.

The Feasibility Of Limited Entry and Permit Exchange For The Guided Sport Fishery (92-7) by S. Shirley and B. Muse.

Number of Permits Issued and Number of Permits Fished - By Year and Age - For The Limited Fisheries (92-8) by S. Shirley.

1991 Permits Issued and Fished, By Permit Type, Age Class, and Transferability (92-11) by E. Dinneford.

An additional report, A Review of The False Pass and Other Area M Salmon Fisheries By Residency, Gear Type, Species, 1986-1991 (92-18) was prepared by E. Dinneford for the Legislative Affairs Agency. Again, non-confidential reports are available upon request.



TABLE 1. PERMIT AND PERMIT TRANSFER STATISTICS, 1975-1992 \*

Fishery and Area	Year	----- Actual Transfer Information -----					----- Transfer Survey Information -----				
		Total Permanent Permits	Permanent Permits Held by Alaskans	Total Number of Transfers	Number of Permits Involved in Transfers	Change in Residency Due to Transfers	Permits with State Liens	Number of Non-mon. Transfers	Number of Monetary Transfers	Average Price Paid for Permits	Number of Financed Monetary Transfers
<b>Sablefish Longline</b>											
S. Southeastern	89	2	1	0	0	0	0	0	---	0	
	90	3	2	1	1	0	1	1	***	0	
	91	3	1	1	1	- 1	1	1	***	0	
	92	4	0	1	1	- 1	0	1	***	0	
N. Southeastern	88	16	14	0	0	0	0	0	---	0	
	89	27	23	1	1	0	0	1	***	0	
	90	27	23	2	2	0	1	2	***	0	
	91	28	22	3	3	- 1	0	3	***	0	
	92	32	26	6	6	0	3	4	149,000	2	
<b>Sablefish Pots</b>											
S. Southeastern	88	1	1	0	0	0	0	0	---	0	
	89	1	1	0	0	0	0	0	---	0	
	90	1	1	0	0	0	0	0	---	0	
	91	1	1	0	0	0	0	0	---	0	
	92	1	1	0	0	0	0	0	---	0	
<b>Herring Purse Seine</b>											
Southeastern	77	38	36	0	0	0	0	0	---	0	
	78	41	37	2	2	- 1	0	0	---	0	
	79	42	38	2	2	0	1	0	---	0	
	80	42	38	2	2	+ 1	2	0	---	0	
	81	41	38	1	1	0	5	0	---	0	
	82	42	39	4	4	0	5	2	***	2	
	83	42	37	3	3	- 2	6	2	***	1	
	84	42	37	1	1	0	8	1	***	1	
	85	43	38	2	2	0	9	2	***	2	
	86	44	39	3	3	0	9	2	***	2	
	87	44	39	3	3	0	10	2	***	2	
	88	44	36	3	3	- 2	11	3	***	0	
	89	44	35	0	0	0	11	0	---	0	
	90	44	35	2	2	0	11	2	***	1	
91	44	35	4	4	0	13	4	235,000	1		
92	44	35	1	1	0	14	0	---	0		
Prince Wm Sound	77	85	77	3	3	- 1	0	1	***	1	
	78	91	78	7	6	- 1	0	1	***	0	

\* Please read "Notes for Table" at end of table.

TABLE 1. PERMIT AND PERMIT TRANSFER STATISTICS, 1975-1992 \*

Fishery and Area	Year	----- Actual Transfer Information -----					----- Transfer Survey Information -----				
		Total Permanent Permits	Permanent Permits Held by Alaskans	Total Number of Transfers	Number of Permits Involved in Transfers	Change in Residency Due to Transfers	Permits with State Liens	Number of Non-mon. Transfers	Number of Monetary Transfers	Average Price Paid for Permits	Number of Financed Monetary Transfers
Herring Purse Seine Prince Wm Sound	79	92	80	16	13	+ 1	0	1	2	***	1
	80	92	77	7	7	- 1	5	2	4	46,250	3
	81	92	76	4	4	0	8	2	2	***	2
	82	93	78	10	10	0	14	3	7	71,250	6
	83	97	83	2	2	+ 2	16	1	1	***	1
	84	100	86	16	15	+ 1	22	9	7	63,857	7
	85	102	86	16	14	- 1	25	4	12	66,375	5
	86	102	84	13	13	- 1	29	3	10	75,750	6
	87	103	83	6	6	0	29	2	4	96,250	1
	88	103	82	11	10	+ 1	34	1	10	160,500	3
	89	103	81	1	1	+ 1	37	0	1	***	1
	90	103	81	8	8	+ 3	36	5	3	***	2
	91	103	80	7	7	+ 1	35	1	6	222,500	2
	92	103	79	11	11	- 1	37	3	8	187,531	2
Cook Inlet	77	61	57	1	1	0	0	0	1	***	0
	78	67	60	9	7	- 1	0	1	1	***	1
	79	68	59	10	7	0	0	0	4	27,500	1
	80	68	58	3	3	0	5	1	1	***	1
	81	68	56	4	4	- 1	6	1	3	***	1
	82	69	58	2	2	0	6	1	1	***	1
	83	70	59	1	1	0	6	1	0	---	0
	84	72	59	3	3	0	7	2	1	***	1
	85	73	59	12	12	+ 1	8	2	10	16,700	0
	86	73	57	20	19	- 2	10	7	13	31,362	4
	87	73	56	14	14	- 2	12	3	11	111,364	3
	88	73	55	5	5	0	17	1	4	165,000	2
	89	73	53	5	3	0	16	1	4	211,250	3
	90	73	51	5	5	0	18	4	1	***	0
91	73	49	4	4	0	17	1	3	***	1	
92	73	48	5	5	- 1	16	1	4	80,625	1	
Kodiak	84	5	5	0	0	0	0	0	0	---	0
	85	42	39	6	6	0	2	2	4	36,250	2
	86	42	39	9	9	+ 1	4	2	7	23,286	3
	87	44	40	9	7	- 1	6	0	9	22,611	2
	88	45	42	4	4	+ 1	8	2	2	***	1
	89	46	44	7	7	+ 1	7	4	3	***	1
	90	46	42	7	7	0	10	2	5	70,500	2
	91	47	42	5	5	- 1	8	2	3	***	0
92	67	58	11	11	+ 2	10	1	10	47,600	1	

\* Please read "Notes for Table" at end of table.

TABLE 1. PERMIT AND PERMIT TRANSFER STATISTICS, 1975-1992 \*

Fishery and Area	Year	----- Actual Transfer Information -----					----- Transfer Survey Information -----				
		Total Permanent Permits	Permanent Permits Held by Alaskans	Total Number of Transfers	Number of Permits Involved in Transfers	Change in Residency Due to Transfers	Permits with State Liens	Number of Non-mon. Transfers	Number of Monetary Transfers	Average Price Paid for Permits	Number of Financed Monetary Transfers
<b>Herring Beach Seine</b>											
<b>Norton Sound</b>											
	90	2	1	0	0	0	0	0	0	---	0
	91	2	1	0	0	0	0	0	0	---	0
	92	2	1	0	0	0	0	0	0	---	0
<b>Herring Seine/Gill Net</b>											
<b>Kodiak</b>											
	87	1	1	0	0	0	0	0	0	---	0
	88	1	1	0	0	0	0	0	0	---	0
	89	1	1	0	0	0	0	0	0	---	0
	90	1	1	0	0	0	0	0	0	---	0
	91	1	1	0	0	0	0	0	0	---	0
	92	2	1	0	0	0	0	0	0	---	0
<b>Herring Gill Net</b>											
<b>Southeastern</b>											
	78	10	10	1	1	0	0	0	0	---	0
	79	39	35	2	2	0	1	0	0	---	0
	80	44	38	4	4	0	2	0	4	13,363	4
	81	45	39	4	4	+ 1	6	0	4	13,875	2
	82	59	47	6	6	- 1	10	1	5	27,500	5
	83	67	47	12	12	- 6	8	9	3	***	2
	84	82	62	11	11	+ 1	11	5	6	39,583	2
	85	87	61	16	16	- 5	11	4	12	45,000	4
	86	90	61	12	10	- 1	10	8	4	51,250	1
	87	91	60	15	14	0	13	3	12	48,542	6
	88	91	58	16	15	- 2	14	5	11	48,827	4
	89	92	60	6	6	+ 1	14	2	4	54,750	2
	90	98	64	5	5	0	12	3	2	***	1
	91	98	66	8	7	+ 1	13	1	7	27,214	1
	92	106	70	14	13	0	13	2	12	32,388	1
<b>Prince Wm Sound</b>											
	82	24	22	4	4	+ 1	0	1	3	***	1
	83	24	23	4	4	+ 1	3	0	4	17,000	4
	84	24	22	5	5	0	7	1	4	24,000	4
	85	24	23	4	3	+ 1	9	1	3	***	2
	86	24	22	5	5	0	11	1	4	30,500	1
	87	24	22	1	1	0	10	1	0	---	0
	88	24	22	2	2	0	11	0	2	***	1
	89	24	21	3	3	- 1	10	0	3	***	0
	90	24	21	0	0	0	8	0	0	---	0
	91	24	22	2	2	+ 1	8	0	2	***	1

\* Please read "Notes for Table" at end of table.

TABLE 1. PERMIT AND PERMIT TRANSFER STATISTICS, 1975-1992 \*

Fishery and Area	Year	----- Actual Transfer Information -----					----- Transfer Survey Information -----				
		Total Permanent Permits	Permanent Permits Held by Alaskans	Total Number of Transfers	Number of Permits Involved in Transfers	Change in Residency Due to Transfers	Permits with State Liens	Number of Non-mon. Transfers	Number of Monetary Transfers	Average Price Paid for Permits	Number of Financed Monetary Transfers
Herring Gill Net											
Prince Wm Sound	92	24	22	1	1	0	6	1	0	---	0
Kodiak	84	8	8	1	1	0	0	0	1	***	1
	85	54	53	12	11	0	3	2	10	15,600	4
	86	57	57	12	12	+ 1	11	2	10	16,600	4
	87	59	59	9	8	0	14	3	6	15,250	3
	88	64	64	21	20	0	15	3	18	16,511	3
	89	68	66	13	13	- 1	17	1	12	22,813	2
	90	72	69	13	12	0	18	5	8	29,000	0
	91	74	69	10	10	0	17	2	8	31,125	1
	92	94	90	9	9	+ 2	15	2	7	26,886	1
Nelson Island	90	77	74	1	1	0	0	1	0	---	0
	91	80	77	2	2	0	0	2	0	---	0
	92	114	107	0	0	0	0	0	0	---	0
Nunivak Island	90	9	8	0	0	0	0	0	0	---	0
	91	42	40	0	0	0	0	0	0	---	0
	92	48	45	1	1	0	0	1	0	---	0
Lower Yukon	90	66	66	3	2	0	0	3	0	---	0
	91	70	70	5	5	0	0	5	0	---	0
	92	78	78	3	3	0	0	3	0	---	0
Norton Sound	90	211	162	31	29	- 7	0	5	26	29,731	2
	91	229	178	35	33	+ 1	6	8	27	35,370	3
	92	233	182	14	14	0	9	6	8	27,813	2
King/Tanner Crab Pot											
SE Red/Blue King	89	1	1	0	0	0	0	0	0	---	0
	90	1	1	0	0	0	0	0	0	---	0
	91	1	1	0	0	0	0	0	0	---	0
	92	1	1	0	0	0	0	0	0	---	0
SE R/B/Brn King	92	1	1	0	0	0	0	0	0	---	0
SE Brn King	90	1	1	0	0	0	0	0	0	---	0
	91	1	1	0	0	0	0	0	0	---	0
	92	1	1	0	0	0	0	0	0	---	0
SE R/B King + Tanner	89	4	4	0	0	0	0	0	0	---	0
	90	6	6	1	1	0	1	0	1	---	1
	91	7	7	1	1	0	2	0	1	---	1
	92	8	8	0	0	0	2	0	0	---	0

TABLE 1. PERMIT AND PERMIT TRANSFER STATISTICS, 1975-1992 \*

Fishery and Area	Year	----- Actual Transfer Information -----					----- Transfer Survey Information -----				
		Total Permanent Permits	Permanent Permits Held by Alaskans	Total Number of Transfers	Number of Permits Involved in Transfers	Change in Residency Due to Transfers	Permits with State Liens	Number of Non-mon. Transfers	Number of Monetary Transfers	Average Price Paid for Permits	Number of Financed Monetary Transfers
SE All King + Tanner	89	5	5	0	0	0	0	0	0	---	0
	90	14	14	1	1	0	1	0	1	***	1
	91	14	14	1	1	0	3	0	1	***	0
	92	14	14	1	1	0	3	0	1	***	1
SE Tanner Crab	89	1	1	0	0	0	0	0	0	---	0
	90	3	3	1	1	0	0	0	1	***	0
	91	3	3	0	0	0	0	0	0	---	0
	92	3	3	0	0	0	0	0	0	---	0
Herring Spawn on Kelp											
Bristol Bay	92	255	253	2	2	0	1	2	0	---	0
Herring Pound											
Prince Wm Sound	88	128	97	36	34	+ 4	3	4	32	24,519	7
	89	128	101	14	14	+ 5	8	1	13	47,884	4
	90	128	100	4	4	- 1	9	2	2	***	1
	91	128	102	12	12	+ 2	12	0	12	61,375	1
	92	128	105	8	8	0	19	2	6	57,833	3
Salmon Purse Seine											
Southeastern	75	398	198	51	51	- 4	0	8	15	10,633	12
	76	409	202	24	21	- 3	0	1	9	9,222	5
	77	411	196	53	50	- 6	0	6	21	16,667	14
	78	413	193	56	50	- 8	0	5	16	30,929	13
	79	413	189	38	36	- 2	1	3	12	39,917	10
	80	414	193	35	34	+ 3	13	12	15	39,600	9
	81	414	194	35	34	0	16	12	23	40,652	12
	82	414	186	31	31	- 6	24	10	21	40,286	11
	83	416	187	34	32	- 1	27	14	20	38,531	10
	84	417	185	55	52	- 1	33	17	38	40,884	18
	85	416	181	36	33	- 6	39	9	27	37,907	12
	86	416	184	26	23	+ 2	38	8	18	34,403	3
	87	416	182	36	33	+ 3	43	6	30	40,832	10
	88	416	181	30	29	- 3	45	12	18	65,833	5
	89	416	182	36	36	+ 5	47	7	29	78,448	13
	90	417	180	26	26	- 2	45	8	18	104,667	4
	91	417	181	33	32	+ 2	48	14	19	92,684	6
92	417	178	28	26	- 2	51	11	16	64,969	5	

\* Please read "Notes for Table" at end of table.

TABLE 1. PERMIT AND PERMIT TRANSFER STATISTICS, 1975-1992 \*

Fishery and Area	Year	----- Actual Transfer Information -----					----- Transfer Survey Information -----				
		Total Permanent Permits	Permanent Permits Held by Alaskans	Total Number of Transfers	Number of Permits Involved in Transfers	Change in Residency Due to Transfers	Permits with State Liens	Number of Non-mon. Transfers	Number of Monetary Transfers	Average Price Paid for Permits	Number of Financed Monetary Transfers
Salmon Purse Seine Prince Wm Sound	75	210	164	19	17	+ 2	0	0	7	8,000	5
	76	247	194	42	36	- 5	0	5	11	10,700	6
	77	255	198	28	24	- 3	0	1	6	29,800	5
	78	257	193	36	32	- 5	0	3	10	24,272	4
	79	258	192	47	41	- 3	5	3	13	33,846	5
	80	258	197	29	28	+ 1	15	12	14	40,154	6
	81	259	190	34	34	- 5	33	18	16	69,531	10
	82	259	188	26	26	+ 1	41	12	14	101,690	13
	83	259	187	29	28	- 1	53	12	17	142,384	14
	84	261	188	23	22	- 2	62	12	11	131,695	9
	85	261	191	27	25	+ 7	68	10	17	104,206	8
	86	262	190	26	24	+ 1	71	13	13	99,400	9
	87	262	191	36	35	+ 1	72	15	21	90,000	16
	88	263	184	32	30	- 3	71	13	19	135,158	7
	89	263	184	15	15	0	72	9	6	236,333	2
	90	264	184	16	15	0	71	11	5	228,000	3
	91	264	182	21	20	- 2	65	11	10	215,500	1
92	265	189	25	25	+ 4	69	6	19	98,347	5	
Cook Inlet	75	49	49	3	2	0	0	0	0	---	0
	76	63	62	7	6	- 1	0	1	2	***	2
	77	72	72	12	11	0	0	2	4	10,625	2
	78	74	74	10	9	0	0	2	5	40,000	4
	79	75	74	9	8	0	1	2	1	***	1
	80	75	73	12	12	- 1	5	4	7	82,786	3
	81	75	73	10	9	0	10	3	7	83,714	5
	82	77	76	11	11	0	16	6	5	84,267	5
	83	78	78	15	14	+ 1	23	7	8	90,000	7
	84	78	77	10	8	- 1	24	9	1	***	1
	85	80	79	5	5	0	26	1	4	58,375	3
	86	82	81	9	9	0	27	4	5	60,000	4
	87	82	81	16	15	0	27	5	11	60,455	6
	88	82	81	14	14	0	31	5	9	66,089	6
89	82	81	10	9	0	33	7	3	***	2	
90	82	81	6	5	0	32	2	4	177,500	0	
91	82	80	3	3	0	29	1	2	***	0	
92	82	79	4	4	0	30	3	1	***	0	
Kodiak	75	334	242	22	22	+ 4	0	4	7	4,571	5
	76	358	262	42	40	- 1	0	6	13	9,736	5
	77	365	270	72	62	+ 3	0	13	19	17,611	7

\* Please read "Notes for Table" at end of table.

TABLE 1. PERMIT AND PERMIT TRANSFER STATISTICS, 1975-1992 \*

Fishery and Area	Year	----- Actual Transfer Information -----					----- Transfer Survey Information -----				
		Total Permanent Permits	Permanent Permits Held by Alaskans	Total Number of Transfers	Number of Permits Involved in Transfers	Change in Residency Due to Transfers	Permits with State Liens	Number of Non-mon. Transfers	Number of Monetary Transfers	Average Price Paid for Permits	Number of Financed Monetary Transfers
Salmon Purse Seine Kodiak	78	371	273	60	52	+ 3	0	11	9	47,611	9
	79	374	272	57	41	- 2	3	5	12	66,045	6
	80	375	275	35	34	+ 4	24	5	24	70,688	15
	81	375	280	37	36	+ 7	50	16	20	68,625	15
	82	376	284	43	42	+ 4	66	14	29	75,511	28
	83	377	289	47	47	+ 4	81	19	28	69,903	20
	84	378	286	29	29	- 2	91	12	17	61,265	7
	85	379	288	43	39	0	99	20	23	46,337	9
	86	380	293	52	46	+ 5	102	25	27	36,151	12
	87	381	293	61	53	+ 2	104	23	38	44,128	13
	88	382	288	55	50	- 5	113	21	34	66,491	15
	89	382	287	38	37	0	113	15	22	132,795	8
	90	382	283	25	25	0	114	8	17	146,588	4
91	383	282	22	22	- 1	110	7	15	119,170	4	
92	383	282	33	33	+ 4	108	14	19	69,316	5	
Chignik	75	85	64	4	4	0	0	1	1	***	1
	76	90	72	4	4	0	0	2	0	---	0
	77	90	73	6	5	+ 1	0	2	1	***	1
	78	90	76	3	3	0	0	1	0	---	0
	79	90	76	1	1	+ 1	0	0	0	---	0
	80	90	76	1	1	0	2	1	0	---	0
	81	90	74	5	4	- 1	5	2	3	***	3
	82	90	74	7	6	0	5	5	2	***	1
	83	90	74	4	4	0	9	2	2	***	1
	84	90	75	9	8	0	13	5	4	322,500	3
	85	90	77	6	6	+ 1	15	3	3	***	2
	86	90	77	5	5	+ 1	16	3	2	***	1
	87	90	76	0	0	0	17	0	0	---	0
	88	90	75	4	3	- 1	19	3	1	***	1
89	90	74	4	4	- 1	20	2	2	***	1	
90	90	74	4	4	+ 1	23	2	2	***	1	
91	90	72	4	4	0	21	2	2	***	1	
92	90	73	2	2	+ 1	21	0	2	***	0	
Alaska Peninsula	75	108	95	3	3	0	0	0	0	---	0
	76	112	99	6	5	0	0	3	0	---	0
	77	113	100	15	13	0	0	4	1	***	0
	78	115	104	12	12	+ 1	0	2	3	***	2
	79	117	102	13	12	- 3	0	3	5	66,000	1
	80	117	97	19	17	- 3	3	14	2	***	1

\* Please read "Notes for Table" at end of table.

TABLE 1. PERMIT AND PERMIT TRANSFER STATISTICS, 1975-1992 \*

Fishery and Area	Year	----- Actual Transfer Information -----					----- Transfer Survey Information -----				
		Total Permanent Permits	Permanent Permits Held by Alaskans	Total Number of Transfers	Number of Permits Involved in Transfers	Change in Residency Due to Transfers	Permits with State Liens	Number of Non-mon. Transfers	Number of Monetary Transfers	Average Price Paid for Permits	Number of Financed Monetary Transfers
<b>Salmon Purse Seine</b>											
<b>Alaska Peninsula</b>											
	81	117	98	9	9	+ 1	7	7	2	***	2
	82	118	99	5	5	0	6	3	2	***	0
	83	118	98	22	19	- 2	7	16	6	195,000	5
	84	118	98	8	8	+ 1	11	5	3	***	3
	85	119	100	3	3	0	15	3	0	---	0
	86	119	99	10	10	- 1	17	6	4	251,250	2
	87	119	96	10	10	- 2	18	6	4	145,000	2
	88	119	93	13	13	- 2	18	9	4	149,625	0
	89	119	92	5	5	- 1	19	3	2	***	0
	90	119	92	5	5	- 1	25	3	2	***	1
	91	119	92	5	3	0	26	5	0	---	0
	92	119	91	12	11	- 1	24	6	6	191,717	0
<b>Salmon Beach Seine</b>											
<b>Kodiak</b>											
	75	21	20	0	0	0	0	0	0	---	0
	76	23	22	2	2	0	0	0	0	---	0
	77	30	27	10	8	- 1	0	1	3	***	2
	78	33	30	16	14	0	0	4	3	***	1
	79	33	30	7	7	- 1	0	1	4	36,500	3
	80	34	31	9	9	- 1	0	1	4	42,625	2
	81	34	32	10	8	0	4	3	7	42,429	5
	82	34	32	4	4	0	3	2	2	***	2
	83	35	32	5	5	0	6	2	3	***	3
	84	35	32	3	3	0	7	1	2	***	1
	85	34	30	6	5	- 1	7	2	4	23,750	1
	86	34	30	3	3	0	6	1	2	***	0
	87	33	31	7	7	0	7	2	5	25,000	3
	88	33	30	8	8	- 1	5	3	5	28,400	0
	89	33	29	9	9	- 2	4	3	6	34,833	2
	90	33	29	3	3	+ 1	3	0	3	***	0
	91	33	30	3	2	0	4	1	2	***	0
	92	33	30	4	4	0	3	3	1	***	0
<b>Salmon Drift Gill Net</b>											
<b>Southeastern</b>											
	75	431	293	94	89	+ 6	0	9	28	9,211	21
	76	449	313	59	48	+ 4	0	6	12	10,213	7
	77	460	323	71	68	+ 6	0	11	25	16,262	17
	78	463	329	81	67	+ 5	0	11	26	34,604	18
	79	464	324	72	60	- 6	10	8	19	41,763	14

\* Please read "Notes for Table" at end of table.



TABLE 1. PERMIT AND PERMIT TRANSFER STATISTICS, 1975-1992 \*

Fishery and Area	Year	----- Actual Transfer Information -----					----- Transfer Survey Information -----				
		Total Permanent Permits	Permanent Permits Held by Alaskans	Total Number of Transfers	Number of Permits Involved in Transfers	Change in Residency Due to Transfers	Permits with State Liens	Number of Non-mon. Transfers	Number of Monetary Transfers	Average Price Paid for Permits	Number of Financed Monetary Transfers
-----											
Salmon Drift Gill Net											
Southeastern	80	464	322	59	56	- 1	35	22	35	41,714	21
	81	464	319	66	61	- 1	56	25	40	43,920	30
	82	466	315	74	66	-10	68	33	41	38,495	30
	83	467	322	50	45	0	83	13	37	34,508	23
	84	467	316	64	60	- 9	85	21	43	32,898	14
	85	468	320	61	59	+ 1	92	18	43	35,623	21
	86	468	326	71	65	+ 1	108	26	45	44,849	22
	87	468	327	52	48	- 2	108	18	34	55,632	16
	88	468	316	50	41	-10	109	20	30	75,958	12
	89	468	309	25	23	- 4	114	9	16	125,625	9
	90	468	307	45	43	- 3	116	17	28	106,500	7
	91	468	317	46	44	+ 8	121	13	33	82,773	10
	92	468	321	42	37	+ 2	123	13	29	71,276	8
Prince Wm Sound	75	494	366	36	33	+ 1	0	4	9	3,089	6
	76	514	390	70	64	+ 3	0	10	18	4,500	15
	77	524	393	83	71	- 2	0	8	30	13,750	20
	78	528	384	84	69	- 4	0	8	25	27,742	19
	79	531	384	68	62	+ 1	4	11	22	35,632	13
	80	531	392	54	51	+ 4	16	19	26	27,288	17
	81	531	398	74	73	+ 8	56	20	54	32,204	30
	82	531	384	78	72	-10	74	27	51	46,461	32
	83	533	396	54	53	+ 1	105	17	37	61,450	24
	84	534	393	57	52	- 6	129	22	35	53,157	18
	85	534	386	70	66	- 5	138	17	53	55,679	25
	86	536	384	57	53	- 2	145	11	46	62,006	23
	87	536	386	57	55	+ 5	154	12	45	62,147	21
	88	536	386	68	60	+11	168	18	50	75,802	17
	89	537	392	29	28	0	158	14	15	137,833	8
	90	537	391	41	39	0	155	14	27	160,523	11
	91	537	395	41	39	+ 2	158	17	24	122,250	6
	92	537	405	40	40	+ 2	158	14	26	95,212	3
Cook Inlet	75	453	291	30	30	+ 3	0	3	10	3,911	3
	76	514	342	76	73	+ 2	0	9	29	5,552	12
	77	539	359	87	79	- 4	0	13	28	9,643	14
	78	549	365	87	82	0	0	20	21	36,825	15
	79	554	371	86	75	+ 3	6	13	24	82,636	18
	80	554	373	76	72	+ 2	42	36	34	67,290	28
	81	554	375	76	73	- 1	82	27	48	67,213	39
	82	554	382	64	61	+ 4	97	27	37	57,866	27

\* Please read "Notes for Table" at end of table.

TABLE 1. PERMIT AND PERMIT TRANSFER STATISTICS, 1975-1992 \*

Fishery and Area	Year	----- Actual Transfer Information -----						----- Transfer Survey Information -----				
		Total Permanent Permits	Permanent Permits Held by Alaskans	Total Number of Transfers	Number of Permits Involved in Transfers	Change in Residency Due to Transfers	Permits with State Liens	Number of Non-mon. Transfers	Number of Monetary Transfers	Average Price Paid for Permits	Number of Financed Monetary Transfers	
Salmon Drift Gill Net Cook Inlet	83	555	390	72	69	+ 4	123	21	51	69,720	39	
	84	556	399	48	48	+ 2	139	13	35	66,306	20	
	85	557	394	62	58	- 1	156	23	39	62,759	22	
	86	559	394	71	68	0	165	21	50	63,902	27	
	87	560	399	44	42	+ 4	168	18	26	86,542	11	
	88	561	403	35	33	+ 3	177	7	28	126,138	11	
	89	561	398	53	53	- 2	169	18	35	168,400	14	
	90	561	394	54	51	- 1	169	30	24	203,063	6	
	91	562	396	43	41	+ 3	166	15	28	177,214	7	
	92	562	388	45	44	- 4	157	13	32	88,816	9	
	Alaska Peninsula	75	152	109	4	4	0	0	1	0	---	0
		76	153	110	17	17	0	0	1	4	6,333	1
77		154	108	31	26	- 1	0	7	7	10,286	5	
78		156	109	27	25	- 5	0	6	5	15,000	3	
79		156	107	32	26	- 1	0	7	4	60,625	3	
80		156	103	28	25	- 4	12	16	8	95,875	5	
81		156	101	23	23	- 3	15	13	10	123,500	7	
82		156	98	25	24	- 2	19	12	13	119,000	8	
83		156	96	26	23	- 1	18	17	9	145,778	5	
84		156	96	15	15	- 1	23	8	7	186,429	5	
85		156	92	24	22	- 3	32	9	15	159,153	11	
86		157	94	22	22	+ 1	38	9	13	197,000	7	
87		158	93	9	9	0	40	2	7	215,429	4	
88		158	90	7	7	- 3	39	5	2	***	1	
89		158	87	13	13	- 2	39	8	5	344,000	2	
90	158	87	15	14	+ 1	45	4	11	356,136	4		
91	159	89	7	7	+ 1	48	1	6	357,000	3		
92	159	89	11	11	0	44	4	7	319,286	5		
Bristol Bay	75	1,416	767	81	80	+ 9	0	16	19	1,166	9	
	76	1,622	918	126	124	0	0	34	30	2,536	10	
	77	1,663	947	213	196	-11	0	47	63	6,180	40	
	78	1,700	973	235	211	-12	0	49	78	21,638	52	
	79	1,717	971	225	197	-14	8	44	51	64,588	37	
	80	1,717	967	169	162	0	87	68	79	89,032	59	
	81	1,720	964	168	161	- 3	142	77	89	82,107	59	
	82	1,724	960	183	179	-13	191	70	113	94,344	77	
	83	1,727	989	160	155	+15	284	63	97	99,072	78	
	84	1,729	969	153	146	-17	356	65	88	117,036	52	
85	1,738	976	138	130	0	391	49	89	114,647	41		

\* Please read "Notes for Table" at end of table.

TABLE 1. PERMIT AND PERMIT TRANSFER STATISTICS, 1975-1992 \*

Fishery and Area	Year	Actual Transfer Information					Transfer Survey Information				
		Total Permanent Permits	Permanent Permits Held by Alaskans	Total Number of Transfers	Number of Permits Involved in Transfers	Change in Residency Due to Transfers	Permits with State Liens	Number of Non-mon. Transfers	Number of Monetary Transfers	Average Price Paid for Permits	Number of Financed Monetary Transfers
Salmon Drift Gill Net											
Bristol Bay											
	86	1,743	978	155	144	+ 1	411	57	97	121,120	54
	87	1,746	967	129	125	-10	418	51	78	130,265	40
	88	1,749	954	126	121	-12	432	49	77	167,461	32
	89	1,776	959	116	112	+ 2	438	63	53	233,400	26
	90	1,785	961	107	103	- 3	435	47	60	212,855	20
	91	1,793	945	102	97	-18	408	41	61	201,173	7
	92	1,797	925	128	126	-23	384	62	66	187,613	15
Salmon Set Net											
Yakutat											
	75	147	131	9	8	+ 2	0	1	3	***	2
	76	156	140	15	15	+ 1	0	8	4	6,000	2
	77	158	141	16	15	- 1	0	2	5	7,000	1
	78	161	142	22	20	- 1	0	4	5	10,480	2
	79	164	143	13	12	- 3	0	3	3	***	1
	80	164	146	16	15	0	2	9	2	***	1
	81	164	146	23	20	0	6	11	11	26,682	6
	82	164	144	15	14	- 1	12	7	8	32,792	5
	83	164	144	18	17	- 1	13	14	4	27,250	2
	84	164	145	13	13	+ 1	11	9	4	23,750	2
	85	164	145	18	17	+ 1	15	9	9	25,862	7
	86	164	142	17	16	0	17	10	7	26,857	2
	87	164	139	17	16	- 2	14	12	5	27,200	0
	88	164	135	27	27	- 3	17	10	17	28,279	7
	89	165	138	18	18	- 1	17	13	5	33,200	2
	90	165	139	22	22	+ 1	19	10	12	36,458	2
	91	167	142	20	19	+ 2	20	12	8	44,125	2
	92	168	143	13	12	- 1	19	10	3	***	0
Prince Wm Sound											
	75	26	21	2	2	+ 2	0	0	0	---	0
	76	28	23	0	0	0	0	0	0	---	0
	77	28	21	2	2	- 1	0	0	0	---	0
	78	28	23	5	4	+ 1	0	0	2	***	1
	79	28	23	2	2	0	0	0	1	***	1
	80	28	24	3	3	+ 1	0	3	0	---	0
	81	29	24	2	2	0	1	0	2	***	1
	82	30	27	5	5	+ 2	2	0	5	19,400	5
	83	30	28	9	8	+ 1	2	3	6	24,167	5
	84	30	28	6	6	0	3	2	4	31,250	1
	85	30	28	5	5	0	6	1	4	32,375	2
	86	30	28	1	1	0	7	0	1	***	1

\* Please read "Notes for Table" at end of table.

TABLE 1. PERMIT AND PERMIT TRANSFER STATISTICS, 1975-1992 \*

Fishery and Area	Year	----- Actual Transfer Information -----					----- Transfer Survey Information -----				
		Total Permanent Permits	Permanent Permits Held by Alaskans	Total Number of Transfers	Number of Permits Involved in Transfers	Change in Residency Due to Transfers	Permits with State Liens	Number of Non-mon. Transfers	Number of Monetary Transfers	Average Price Paid for Permits	Number of Financed Monetary Transfers
Salmon Set Net Prince Wm Sound	87	30	27	6	5	- 1	7	2	4	29,625	0
	88	30	27	6	6	+ 1	6	4	2	***	1
	89	30	27	4	4	0	5	3	1	***	0
	90	30	28	1	1	+ 1	4	0	1	***	0
	91	30	27	2	2	- 1	5	1	1	***	0
	92	30	27	3	3	0	5	2	1	***	1
Cook Inlet	75	652	608	47	46	0	0	7	9	2,250	6
	76	712	670	77	74	+ 9	0	14	14	1,778	7
	77	731	690	93	90	+ 3	0	12	29	4,821	15
	78	742	698	129	120	+ 1	0	23	46	9,824	15
	79	744	702	99	92	- 6	0	24	20	23,412	9
	80	744	697	89	87	+ 2	5	42	42	15,333	25
	81	744	685	110	103	- 7	18	50	59	15,322	31
	82	744	693	90	86	- 2	28	48	42	17,190	21
	83	743	683	103	101	-11	34	52	51	18,340	19
	84	743	670	89	86	-11	41	44	45	17,078	15
	85	744	670	92	90	- 7	44	41	51	16,312	10
	86	743	665	102	97	- 2	46	42	60	18,310	10
	87	743	660	101	98	- 3	48	33	68	26,727	14
	88	743	660	79	77	- 1	50	33	46	41,151	4
	89	743	645	91	87	- 9	54	42	49	57,694	11
	90	743	644	83	80	- 3	68	41	42	91,171	8
	91	745	643	63	63	- 2	71	43	20	65,875	5
92	745	637	79	77	+ 5	71	54	25	40,793	7	
Kodiak	75	139	103	22	22	+ 8	0	7	7	5,380	5
	76	176	133	37	34	- 2	0	4	10	3,900	2
	77	181	137	28	26	+ 1	0	5	7	6,600	4
	78	184	138	28	25	+ 2	0	9	6	19,800	4
	79	185	137	32	27	0	1	4	10	33,667	6
	80	186	137	34	33	+ 1	6	16	9	39,861	5
	81	186	140	25	25	+ 1	18	15	9	41,278	7
	82	186	138	28	28	- 3	21	16	12	39,817	7
	83	186	139	19	18	+ 1	23	13	6	57,033	5
	84	187	141	24	23	+ 1	30	13	11	57,200	5
	85	187	147	22	22	+ 3	34	15	7	56,357	3
	86	187	150	38	36	+ 3	32	19	19	61,792	8
	87	187	152	25	25	+ 3	29	17	8	60,122	3
88	187	150	15	14	+ 1	31	12	3	***	1	
89	188	144	15	14	- 1	29	9	6	69,542	2	

\* Please read "Notes for Table" at end of table.

TABLE 1. PERMIT AND PERMIT TRANSFER STATISTICS, 1975-1992 \*

Fishery and Area	Year	----- Actual Transfer Information -----					----- Transfer Survey Information -----				
		Total Permanent Permits	Permanent Permits Held by Alaskans	Total Number of Transfers	Number of Permits Involved in Transfers	Change in Residency Due to Transfers	Permits with State Liens	Number of Non-mon. Transfers	Number of Monetary Transfers	Average Price Paid for Permits	Number of Financed Monetary Transfers
Salmon Set Net Kodiak	90	188	143	16	16	+ 1	27	10	6	85,000	2
	91	188	138	21	19	- 1	27	18	3	***	2
	92	188	139	27	25	+ 3	31	18	9	109,722	3
Alaska Peninsula	75	82	76	4	3	0	0	2	0	---	0
	76	105	98	5	5	0	0	2	3	***	1
	77	106	95	15	14	- 1	0	1	4	5,150	1
	78	108	99	14	13	0	0	3	2	***	0
	79	108	99	12	11	0	0	2	0	---	0
	80	109	98	17	14	- 2	1	7	5	14,500	3
	81	109	98	21	21	0	3	12	9	54,278	7
	82	109	96	19	19	- 1	5	8	11	54,636	6
	83	109	96	24	24	0	5	13	11	50,836	3
	84	109	95	18	18	- 1	7	9	9	45,332	2
	85	110	94	14	14	- 2	11	7	7	47,500	2
	86	113	92	11	10	- 4	13	4	7	56,357	4
	87	113	90	23	22	- 2	16	14	9	55,722	5
	88	113	94	13	12	+ 2	20	9	3	***	2
	89	113	94	9	9	0	19	8	1	***	0
90	113	93	6	6	- 1	21	3	3	***	0	
91	113	91	8	8	- 1	24	5	3	***	1	
92	113	93	11	11	+ 1	27	4	7	101,429	2	
Bristol Bay	75	716	592	22	22	+ 2	0	9	0	---	0
	76	759	621	68	65	- 3	0	23	11	2,755	6
	77	824	669	76	74	- 6	0	21	19	2,695	4
	78	891	733	133	125	+ 4	0	39	27	8,507	9
	79	910	745	133	125	- 6	1	32	38	18,184	16
	80	913	728	113	111	-11	11	49	49	30,689	20
	81	914	714	112	106	-17	30	55	56	32,370	27
	82	916	704	118	115	-13	45	48	70	37,357	42
	83	929	710	97	94	- 4	63	48	49	41,680	27
	84	931	711	90	87	- 8	63	43	47	40,766	22
	85	931	713	98	96	0	75	50	48	35,974	22
	86	940	718	97	92	+ 5	86	36	61	33,300	18
	87	942	722	108	101	+ 1	89	44	64	34,453	20
	88	941	715	97	93	- 2	94	50	47	46,508	16
	89	1,007	770	95	92	- 6	86	55	39	63,731	11
90	1,011	770	85	81	+ 2	94	52	33	60,545	8	
91	1,012	763	83	78	- 1	102	43	40	58,425	7	
92	1,017	766	92	86	- 2	102	45	47	48,904	5	

\* Please read "Notes for Table" at end of table.

TABLE 1. PERMIT AND PERMIT TRANSFER STATISTICS, 1975-1992 \*

Fishery and Area	Year	----- Actual Transfer Information -----					----- Transfer Survey Information -----				
		Total Permanent Permits	Permanent Permits Held by Alaskans	Total Number of Transfers	Number of Permits Involved in Transfers	Change in Residency Due to Transfers	Permits with State Liens	Number of Non-mon. Transfers	Number of Monetary Transfers	Average Price Paid for Permits	Number of Financed Monetary Transfers
<b>Salmon Power Troll</b>											
<b>Southeastern</b>											
	75	849	619	137	130	+23	0	11	52	5,303	27
	76	915	677	78	76	+ 2	0	14	29	5,065	18
	77	929	698	159	147	+15	0	11	64	8,831	25
	78	934	717	143	127	+13	0	13	78	15,457	39
	79	939	718	126	108	- 3	26	13	61	26,680	39
	80	939	703	97	94	-11	76	14	72	33,308	41
	81	939	712	95	92	+ 7	127	23	68	29,012	47
	82	940	717	86	83	- 3	153	15	71	21,630	44
	83	939	722	95	94	0	167	22	73	20,864	40
	84	940	720	83	81	-10	188	12	71	19,456	34
	85	942	729	83	82	+ 1	211	10	73	21,509	40
	86	942	729	88	85	+ 2	229	16	72	24,776	38
	87	942	748	75	72	+15	239	10	65	26,431	28
	88	942	755	83	80	+13	269	15	68	29,782	37
	89	942	756	63	61	+13	266	7	56	32,446	23
	90	942	753	65	61	0	266	14	51	33,142	17
	91	944	746	71	69	- 7	252	15	56	36,299	6
	92	944	749	57	54	- 3	237	14	43	33,727	10
<b>Salmon Hand Troll</b>											
<b>Southeastern</b>											
	82	696	659	56	53	- 2	0	24	32	4,036	4
	83	2,121	1,971	100	98	- 5	8	16	84	4,964	16
	84	2,120	1,952	75	73	-11	12	7	68	4,732	11
	85	1,984	1,835	110	105	- 9	17	21	89	5,109	7
	86	1,957	1,804	124	120	- 4	18	16	108	5,252	5
	87	1,919	1,757	109	106	- 7	16	16	93	5,551	8
	88	1,856	1,680	122	121	-10	22	25	97	6,446	7
	89	1,807	1,631	79	76	0	19	13	66	7,323	7
	90	1,767	1,592	116	108	- 5	20	18	98	8,322	10
	91	1,727	1,558	106	101	+ 3	17	24	82	8,321	5
	92	1,682	1,507	85	81	-10	14	15	70	8,477	4
<b>Salmon Fishwheel</b>											
<b>Upper Yukon</b>											
	76	80	80	2	2	0	0	0	0	---	0
	77	107	107	2	2	0	0	0	0	---	0
	78	108	107	11	10	0	0	0	0	---	0
	79	114	114	6	6	0	0	1	3	***	1
	80	114	114	9	9	0	0	4	5	9,320	2
	81	123	123	16	16	0	0	2	14	10,893	3

\* Please read "Notes for Table" at end of table.

TABLE 1. PERMIT AND PERMIT TRANSFER STATISTICS, 1975-1992 \*

Fishery and Area	Year	----- Actual Transfer Information -----					----- Transfer Survey Information -----				
		Total Permanent Permits	Permanent Permits Held by Alaskans	Total Number of Transfers	Number of Permits Involved in Transfers	Change in Residency Due to Transfers	Permits with State Liens	Number of Non-mon. Transfers	Number of Monetary Transfers	Average Price Paid for Permits	Number of Financed Monetary Transfers
Salmon Fishwheel											
Upper Yukon	82	130	130	12	12	0	0	4	8	10,500	2
	83	130	129	19	19	- 1	2	12	7	11,643	4
	84	130	129	10	10	0	4	4	6	12,333	0
	85	132	132	9	8	+ 1	4	6	3	***	0
	86	133	132	8	8	0	4	6	2	***	0
	87	133	133	13	13	+ 1	2	4	9	9,089	0
	88	133	133	12	11	0	2	7	5	8,700	0
	89	133	133	7	7	0	2	4	3	***	0
	90	133	132	11	11	0	2	5	6	11,667	1
	91	133	132	12	12	0	2	5	7	10,843	0
	92	162	161	12	12	0	2	7	5	10,900	0
AYK Salmon Gill Net											
Upper Yukon	76	35	35	1	1	0	0	0	0	---	0
	77	44	44	1	1	0	0	0	1	***	0
	78	47	46	2	2	0	0	0	0	---	0
	79	49	48	5	5	0	0	1	2	***	1
	80	48	47	6	5	0	0	6	0	---	0
	81	64	64	8	8	0	0	5	3	***	0
	82	72	71	9	8	0	0	3	6	8,367	0
	83	72	70	10	9	- 1	0	5	5	10,600	0
	84	70	69	4	4	0	0	3	1	***	1
	85	70	69	2	2	0	0	0	2	***	0
	86	70	69	6	6	0	0	3	3	***	0
	87	71	70	7	7	0	0	5	2	***	1
	88	70	68	5	5	0	0	2	3	***	0
	89	69	67	4	4	0	1	0	4	9,875	1
	90	70	68	4	4	0	2	0	4	11,250	1
	91	71	69	3	3	0	2	2	1	***	0
	92	71	69	2	2	0	2	2	0	---	0
Kuskokwim											
	76	688	688	8	8	0	0	3	0	---	0
	77	761	761	18	18	0	0	11	0	---	0
	78	766	765	50	47	0	0	26	6	6,100	2
	79	781	780	39	37	+ 1	1	17	10	6,420	4
	80	782	782	59	56	0	3	33	16	6,875	5
	81	785	784	49	47	- 1	4	34	14	8,339	3
	82	831	829	44	44	- 1	4	36	8	9,563	3
	83	831	828	64	63	0	4	55	9	10,222	2
	84	831	829	52	52	0	9	37	15	9,893	7

\* Please read "Notes for Table" at end of table.

TABLE 1. PERMIT AND PERMIT TRANSFER STATISTICS, 1975-1992 \*

Fishery and Area	Year	----- Actual Transfer Information -----					----- Transfer Survey Information -----					
		Total Permanent Permits	Permanent Permits Held by Alaskans	Total Number of Transfers	Number of Permits Involved in Transfers	Change in Residency Due to Transfers	Permits with State Liens	Number of Non-mon. Transfers	Number of Monetary Transfers	Average Price Paid for Permits	Number of Financed Monetary Transfers	
AYK Salmon Gill Net Kuskokwim	85	831	829	45	43	0	13	39	6	10,083	1	
	86	829	828	43	42	+ 1	16	28	15	10,133	4	
	87	829	828	42	40	0	15	34	8	9,563	0	
	88	828	826	45	43	- 1	18	27	18	9,669	4	
	89	828	826	55	54	0	20	35	20	12,050	0	
	90	829	828	57	56	+ 1	22	39	18	12,056	2	
	91	830	829	39	39	0	19	27	12	13,417	1	
	92	830	828	48	48	0	19	33	15	12,333	4	
	Kotzebue	76	118	118	4	4	0	0	2	0	---	0
		77	175	175	2	2	0	0	0	0	---	0
78		177	177	17	17	0	0	5	1	***	1	
79		180	180	18	18	0	0	3	8	5,200	2	
80		194	193	12	11	0	0	8	3	***	1	
81		211	208	18	18	- 1	0	10	8	7,813	0	
82		219	216	25	23	- 1	2	14	11	9,591	3	
83		219	216	17	17	- 1	5	5	12	13,083	4	
84		219	216	20	19	0	5	18	2	***	1	
85		219	215	13	13	0	11	10	3	***	1	
86		219	214	17	17	- 1	15	11	6	10,819	1	
87		219	211	15	15	0	16	11	4	9,500	1	
88		219	213	33	30	+ 2	14	21	11	7,505	0	
89		219	213	14	14	0	10	11	3	***	0	
90	218	211	17	17	0	8	9	8	8,250	2		
91	217	211	12	12	+ 1	6	11	1	***	1		
92	217	211	12	12	0	5	8	4	10,500	1		
Lower Yukon	76	678	677	6	5	0	0	4	0	---	0	
	77	692	691	9	9	0	0	3	2	***	0	
	78	695	691	26	25	- 1	0	14	5	6,700	3	
	79	702	698	28	27	0	0	12	8	5,834	1	
	80	703	700	45	44	0	1	29	9	9,289	2	
	81	706	703	36	35	0	1	24	11	9,545	3	
	82	707	703	40	38	0	2	28	12	18,250	5	
	83	703	698	74	71	- 1	4	48	26	22,346	5	
	84	704	699	41	41	0	10	24	17	28,441	8	
	85	704	700	38	35	0	11	26	12	22,917	1	
	86	703	696	36	36	- 1	16	25	11	22,455	3	
	87	703	698	50	49	+ 2	16	38	12	20,688	2	
88	704	697	37	35	0	19	24	13	20,669	3		
89	704	696	43	43	0	27	32	11	25,527	5		

\* Please read "Notes for Table" at end of table.



TABLE 1. PERMIT AND PERMIT TRANSFER STATISTICS, 1975-1992 \*

Fishery and Area	Year	Actual Transfer Information					Transfer Survey Information				
		Total Permanent Permits	Permanent Permits Held by Alaskans	Total Number of Transfers	Number of Permits Involved in Transfers	Change in Residency Due to Transfers	Permits with State Liens	Number of Non-mon. Transfers	Number of Monetary Transfers	Average Price Paid for Permits	Number of Financed Monetary Transfers
AYK Salmon Gill Net Lower Yukon	90	704	694	28	28	- 2	34	19	9	24,778	3
	91	704	696	43	41	+ 2	35	31	12	23,904	0
	92	704	692	39	38	- 2	37	29	10	27,680	1
Norton Sound	76	169	169	0	0	0	0	0	0	---	0
	77	176	174	2	2	- 1	0	0	0	---	0
	78	176	176	8	8	0	0	1	4	4,350	3
	79	177	175	11	11	- 2	1	2	5	6,300	1
	80	177	175	18	18	0	2	6	11	7,909	3
	81	195	194	17	16	0	3	7	10	9,450	4
	82	200	199	20	19	0	4	10	10	10,100	2
	83	201	199	22	20	- 1	8	15	7	11,429	2
	84	201	199	17	16	0	13	12	5	13,150	3
	85	202	200	13	13	0	13	7	6	12,167	2
	86	201	198	22	20	- 1	14	16	6	10,167	3
	87	201	199	15	15	0	14	11	4	9,750	1
	88	201	199	11	10	0	11	8	3	***	0
	89	201	198	14	13	- 1	11	7	7	9,214	1
	90	200	197	7	7	0	9	5	2	***	0
91	200	198	16	16	0	8	11	5	8,100	0	
92	200	198	8	8	0	7	6	2	***	0	
Totals	75	6,762	4,808	590	568	+58	0	83	167	5,694	102
	76	9,173	7,115	776	729	+ 6	0	152	199	5,455	99
	77	9,772	7,639	1,108	1,019	-10	0	181	341	10,013	178
	78	9,975	7,800	1,314	1,185	- 9	0	260	385	20,541	220
	79	10,104	7,866	1,209	1,071	-45	70	216	342	38,491	195
	80	10,132	7,854	1,060	1,017	-16	375	441	480	45,346	282
	81	10,204	7,902	1,092	1,047	-16	712	475	602	44,288	361
	82	11,030	8,648	1,144	1,100	-57	923	490	654	48,115	398
	83	12,488	10,020	1,211	1,169	- 9	1,196	536	675	48,573	371
	84	12,531	9,996	1,053	1,016	-73	1,424	444	609	49,800	279
	85	12,507	9,979	1,111	1,060	-23	1,610	421	690	46,879	272
	86	12,509	9,954	1,191	1,129	+ 5	1,741	440	750	48,986	282
	87	12,486	9,916	1,120	1,069	+ 5	1,791	422	698	50,769	242
	88	12,578	9,905	1,125	1,066	-22	1,913	428	695	61,858	210
89	12,654	9,910	914	888	- 4	1,912	406	506	86,268	163	
90	13,019	10,181	950	912	-17	1,955	401	549	89,160	128	
91	13,061	10,186	929	893	- 7	1,929	398	531	84,537	87	
92	13,419	10,499	950	919	-25	1,898	423	526	75,946	107	

\* Please read "Notes for Table" at end of table.

Notes for Table:

Total Permanent Permits -- The number of permanent permits may decrease from one year to the next because of revocations.

Permanent Permits Held by Alaskans -- Residency figures were calculated using the permit holder address from 1975-1978. After 1978 permit holders were required to declare their residency status on the renewal form and residency figures were taken from those declarations. These numbers may differ somewhat from those reported in "Changes in the Distribution of Alaska's Commercial Fisheries Entry Permits" published by CFEC. In that report all persons who declared Alaska residency status but had out-of-state addresses are counted as non-residents. Numbers shown in this annual report may differ from those in previous annual reports due to residency status changes resulting from residency investigations. Permits held by the Dept. of Commerce or C.F.A.B. are counted as resident permits.

Total Number of Transfers -- Transfers reported here include foreclosures by the Dept. of Commerce or by C.F.A.B.

Change in Residency Due to Transfers -- These figures may differ from figures reported in previous annual reports due to residency status changes resulting from residency investigations.

Permits with State Liens -- These are permits which have been financed by the Dept. of Commerce or by CFAB or which have been used as collateral against a commercial fishing loan from one of these agencies. These numbers differ from those shown in past CFEC Annual Reports due to permit file corrections and changes in the accounting of foreclosed permits.

Transfer Survey Information -- These surveys were voluntary until January 1, 1980. Many transfers occurred without completion of a survey form during the years 1975-1979. A few surveys are missing for 1980 and 1981. In addition, there have been six administratively ordered transfers in the 1986-1992 period for which no surveys exist.

Non-monetary/Monetary Transfers -- For the years 1980-1992 any transfer survey with a sale price greater than \$500 was counted as a monetary transfer. All other transfers were counted as non-monetary transfers. For the years 1975-1979 the number of monetary transfers reported here is the number of transfer surveys which were used to compute the average price of permits for use by the Dept. of Commerce and CFAB in their loan programs. These surveys were selected using exclusionary criteria different from the \$500 minimum.

Average Price Paid for Permits -- These figures are the average of the sale price taken from all surveys counted as monetary transfers. For the years 1980-1992 they may vary slightly from the average prices used by the Dept. of Commerce and CFAB which are based on exclusionary criteria different from the \$500 minimum used in this report. A "---" indicates that there were no monetary transfers for this fishery. A "\*\*\*\*" indicates confidential information because fewer than four surveys exist.

TABLE 2. LOANS APPROVED BY THE DEPT. OF COMMERCE AND ECONOMIC  
DEVELOPMENT FOR THE PURCHASE OF ENTRY PERMITS  
BY ELECTION DISTRICT, 1992 \*

House Election District	Permit Only		Permit Vessel/Gear		Total	
	No.	Amount	No.	Amount	No.	Amount
01 Greater Ketchikan	2	\$163,600	0	\$0	2	\$163,600
02 Petersburg/Wrangell/Sitka	11	\$678,490	2	\$58,000	11	\$736,490
03-04 Juneau	5	\$278,170	1	\$6,645	5	\$284,815
05 Rural Southeast/Yakutat	4	\$149,600	2	\$98,000	4	\$247,600
06 Kodiak/SE Kenai Peninsula	10	\$957,380	0	\$0	10	\$957,380
07 Homer/East Cook Inlet	18	\$1,714,789	0	\$0	18	\$1,714,789
08 Soldotna/Seward/Sterling Hwy	4	\$307,600	0	\$0	4	\$307,600
09 Kenai/Nikiski/Hope	2	\$169,000	0	\$0	2	\$169,000
10-25 Anchorage	11	\$872,276	0	\$0	11	\$872,276
26 Wasilla	1	\$49,000	0	\$0	1	\$49,000
28 Susitna/Talkeetna/Willow	1	\$28,900	0	\$0	1	\$28,900
29-34 Fairbanks	2	\$129,360	0	\$0	2	\$129,360
35 Cordova/Valdez/Whittier	15	\$1,307,755	0	\$0	15	\$1,307,755
36 Yukon River/Interior	1	\$72,800	0	\$0	1	\$72,800
40 Alaska Peninsula/Aleutian Isles	1	\$35,000	0	\$0	1	\$35,000
	88	\$6,913,720	5	\$162,645	88	\$7,076,365

TABLE 2. LOANS APPROVED BY THE DEPT. OF COMMERCE AND ECONOMIC  
DEVELOPMENT FOR THE PURCHASE OF ENTRY PERMITS  
BY CALENDAR YEAR 1972-1992

Calendar Year	Permit Only		Vessel/Gear		Permit Total	
	No.	Amount	No.	Amount	No.	Amount
1992	88	\$6,913,720	5	\$162,645	88	\$7,076,365
1991	77	\$8,295,089	0	\$0	77	\$8,295,089
1990	99	\$11,471,444	7	\$502,823	106	\$11,974,267
1989	106	\$10,836,615	2	\$171,463	108	\$11,008,078
1988	133	\$9,454,150	11	\$959,421	144	\$10,413,571
1987	123	\$7,680,632	6	\$489,710	129	\$8,170,342
1986	161	\$10,153,268	10	\$702,337	171	\$10,855,605
1985	159	\$9,682,703	22	\$1,509,168	181	\$11,191,871
1984	155	\$9,366,311	7	\$471,050	162	\$9,837,361
1983	147	\$7,697,720	7	\$411,465	154	\$8,109,185
1982	194	\$9,300,897	2	\$134,473	196	\$9,435,370
1981	223	\$10,222,651	13	\$946,591	236	\$11,169,242
1980	93	\$4,145,533	26	\$1,939,951	119	\$6,085,484
1972-79	82	\$3,083,775	63	\$4,706,533	145	\$7,790,308
<b>Total, 1972-1992</b>	<b>1,840</b>	<b>\$118,304,508</b>	<b>181</b>	<b>\$13,107,630</b>	<b>2,016</b>	<b>\$131,412,138</b>

\* Based on the 40 election districts defined in the November 3, 1992 general election.

TABLE 2 (cont.) LOANS MADE BY THE DEPT. OF COMMERCE AND  
ECONOMIC DEVELOPMENT FOR THE PURCHASE OF ENTRY PERMITS  
BY ELECTION DISTRICT FROM 7-1-82 TO 12-31-91 \*

House Election District	Permit Only		Vessel/Gear		Permit Total	
	No.	Amount	No.	Amount	No.	Amount
01 Ketch.-Wrang.-Ptrsbrg	149	\$9,380,415	8	\$522,738	157	\$9,903,153
02 Inside Passage	113	\$4,715,354	17	\$1,197,973	130	\$5,913,327
03 Baranof-Chichagof	84	\$2,270,083	8	\$355,243	92	\$2,625,326
04 Juneau	74	\$4,354,335	5	\$254,080	79	\$4,608,415
05 Kenai-Cook Inlet	281	\$26,131,966	14	\$1,124,984	295	\$27,256,950
06 Prince William Sound	111	\$9,202,486	10	\$802,699	121	\$10,005,185
07-15 Anchorage	161	\$13,010,249	2	\$200,000	163	\$13,210,249
16 Matanuska-Susitna	35	\$3,010,445	1	\$82,000	36	\$3,092,445
17 Interior Highways	12	\$1,150,842	0	\$0	12	\$1,150,842
18-21 Fairbanks	20	\$1,136,177	1	\$92,893	21	\$1,229,070
22 North Slope-Kotzebue	5	\$163,688	0	\$0	5	\$163,688
23 Norton Sound	5	\$168,829	0	\$0	5	\$168,829
24 Interior Rivers	5	\$178,730	0	\$0	5	\$178,730
25 Lower Kuskokwim	14	\$789,142	1	\$100,000	15	\$889,142
26 Bristol Bay-Aleut Isles	61	\$5,231,947	2	\$183,000	63	\$5,414,947
27 Kodiak-E Alaska Pen	100	\$7,132,074	5	\$436,300	105	\$7,568,374
	<u>1,230</u>	<u>\$88,026,762</u>	<u>74</u>	<u>\$5,351,910</u>	<u>1,304</u>	<u>\$93,378,672</u>

TABLE 2 (cont.) LOANS MADE BY THE DEPT. OF COMMERCE AND  
ECONOMIC DEVELOPMENT FOR THE PURCHASE OF ENTRY PERMITS  
BY ELECTION DISTRICT FROM 1-1-72 TO 6-30-82 \*\*

House Election District	Permit Only		Vessel/Gear		Permit Total	
	No.	Amount	No.	Amount	No.	Amount
01 Ketch.-Pr. of Wales	35	\$1,095,228	8	\$456,350	43	\$1,551,578
02 Wrangell-Petersburg	40	\$1,455,646	12	\$1,081,983	52	\$2,537,629
03 Sitka	40	\$1,259,203	4	\$155,030	44	\$1,414,233
04 Juneau-Lynn Canal	59	\$2,219,870	23	\$1,414,937	82	\$3,634,807
05 Cordova-Valdez-Seward	34	\$1,474,816	9	\$628,750	43	\$2,103,566
06 Palmer	15	\$700,921	1	\$160,000	16	\$860,921
07-12 Anchorage	93	\$4,492,966	8	\$606,200	101	\$5,099,166
13 Kenai-Cook Inlet	96	\$5,175,152	19	\$1,400,725	115	\$6,575,877
14 Kodiak	51	\$2,712,120	6	\$609,900	57	\$3,322,020
15 Aleutian Chain	8	\$589,500	4	\$363,000	12	\$952,500
16 Bristol Bay	28	\$1,373,829	7	\$661,200	35	\$2,035,029
17-19 Beth./W.Hamp./Yuk-Tan.	10	\$454,177	0	\$0	10	\$454,177
20 Fairbanks	9	\$334,100	1	\$55,000	10	\$389,100
21 Barrow-Kobuk	1	\$5,625	0	\$0	1	\$5,625
22 Nome	3	\$20,873	0	\$0	3	\$20,873
	522	\$23,364,026	102	\$7,593,075	624	\$30,957,101

\* Based on the 27 election districts created by the 1980 reapportionment effective 7-1-82. \*\*  
Based on the 22 election districts created by the 1970 reapportionment.